



HUMMINBIRD®

Help Topics

About HumminbirdPC™

Use HumminbirdPC™ to easily manage your navigation data from your Humminbird® units and MMC/SD Cards. Organizing your waypoints, routes, and tracks has never been so easy!

Download waypoints, routes, and tracks from your Humminbird® unit or MMC/SD card to HumminbirdPC™, then customize your navigation data from there. Create new routes and waypoints, organize your GPX files with your favorite tracks and routes, and add icons to your waypoints. You can also view your waypoints, routes, and tracks in Google Earth™.

Use HumminbirdPC™ to personalize your Humminbird® unit and update software too.

Once you've customized your information, upload the information to your Humminbird® unit or MMC/SD card. HumminbirdPC™ saves your changes to your computer automatically.

[Click here to get started...](#)



HUMMINBIRD®

Help Topics

Getting Started

Use your HumminbirdPC™ in three easy steps. Click on any of the topics below (underlined and highlighted in [blue](#)) to get started. Also, check out the bottom of each help page for related topics linked to your question.

Overview

When you first open HumminbirdPC™, it will open to the [PC Tab](#). If any other devices are attached to your computer, they will be displayed in a separate tab with their own functions. From the [Unit Tab](#) and [MMC/SD Tab](#), you can personalize your Humminbird® unit and access software updates.

[PC Tab](#)

[Unit Tab](#)

[MMC/SD Tab](#)

1. Download navigation data from your Humminbird® unit or MMC/SD card.

[Download](#)

2. From the PC Tab, you can organize your navigation data, as well as edit waypoints and routes on your PC. View waypoints, routes, and tracks in Google Earth™, and [share GPX files between devices](#).

[GPX Files](#)

[Waypoints](#)

[Routes](#)

[Tracks](#)

[Google Earth™](#)

3. Upload your customized navigation data directly to your Humminbird® unit or MMC/SD card.

[Upload](#)

Related Topics

[Toolbar Buttons](#)

[Keyboard Shortcuts](#)

[Mouse Functions](#)

[Troubleshooting/FAQ](#)

© 2008 Humminbird®, Eufaula AL, USA. All rights reserved.



HUMMINBIRD®

Help Topics

What's on the HumminbirdPC™ Screen

When you first open HumminbirdPC™, it will open to the PC Tab. If any other devices are attached to your computer, they will be displayed in a separate tab with their own functions.

From the PC tab, you can download navigation data from a Humminbird® unit or MMC/SD card, view and organize navigation data, create new waypoints and routes, and share waypoints, routes, and tracks. You can also view your navigation data in Google Earth™.

See the illustration below for details on the screen.

Toolbar Buttons
 Hover the mouse pointer over each button, and the function will display.

Navigation Information
 Lists the name, latitude/longitude position, and date for the highlighted waypoint, route, or track.

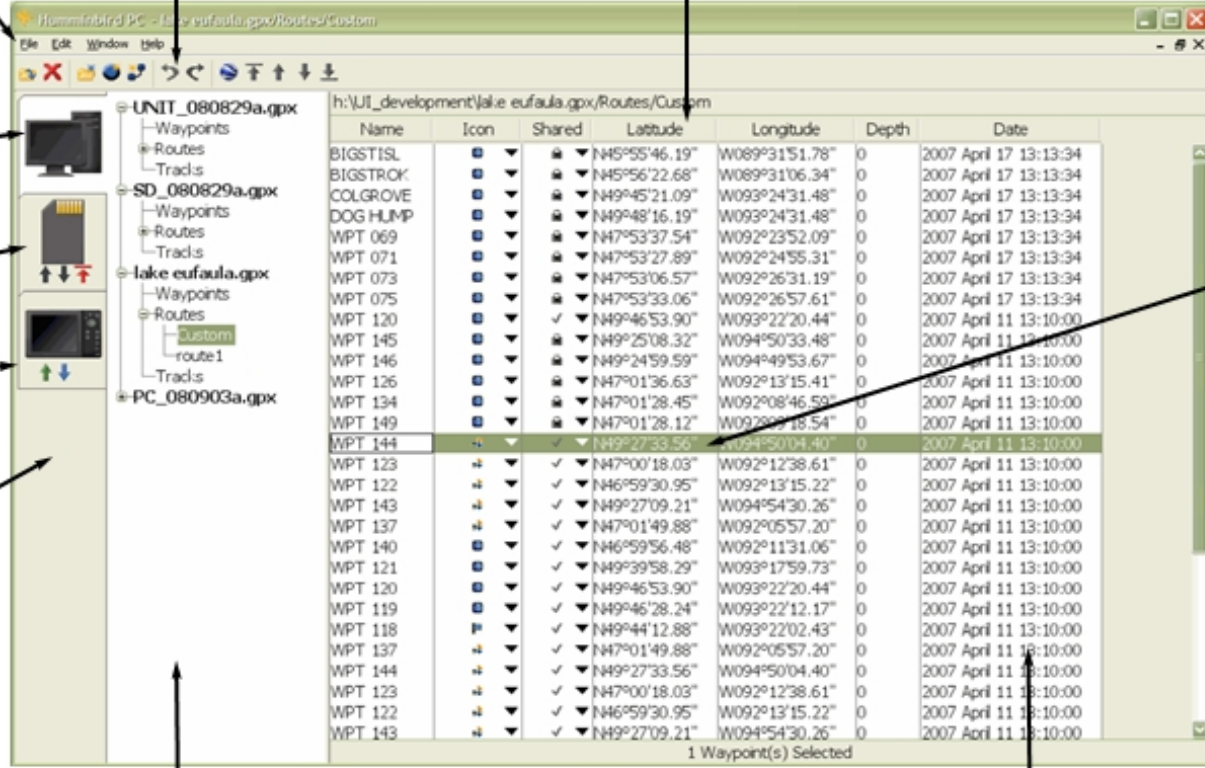
Toolbar Menus
 File
 Edit
 Window
 Help

PC Tab

MMC/SD Tab

Unit Tab

Tab Pane
 A new tab will open for each attached device.



Selected Waypoint
 You can change the name, icon, latitude/longitude position, and whether or not it is shared across the InterLink™ accessory (optional purchase required).

File Pane
 Active GPX files with saved waypoints, routes, and tracks.

Active Window
 Click on a waypoint, route, or track, and the data will be displayed in the active window.

Managing the PC Tab

[Download](#)

[Upload](#)

[GPX Files](#)

[Waypoints](#)

[Routes](#)

[Tracks](#)

Related Topics

[MMC/SD Tab](#)

[Unit Tab](#)

[Mouse Functions](#)

[Toolbar Buttons](#)

[Keyboard Shortcuts](#)

[Getting Started](#)

© 2008 Humminbird®, Eufaula AL, USA. All rights reserved.



HUMMINBIRD®

Help Topics

Unit Tab

When a Humminbird® unit is connected to your computer and powered on, HumminbirdPC™ will display the Unit Tab. Click the Unit Tab to open it and view the unit information.

From this tab, you can view navigation data on the unit, enter personalized text which will appear on the unit's splash screen, and update software. See the illustration below for details on the screen.

Data Button

Click this button to view the navigation data on the attached unit.

Unit Information

Model
Serial Number

Customize Button

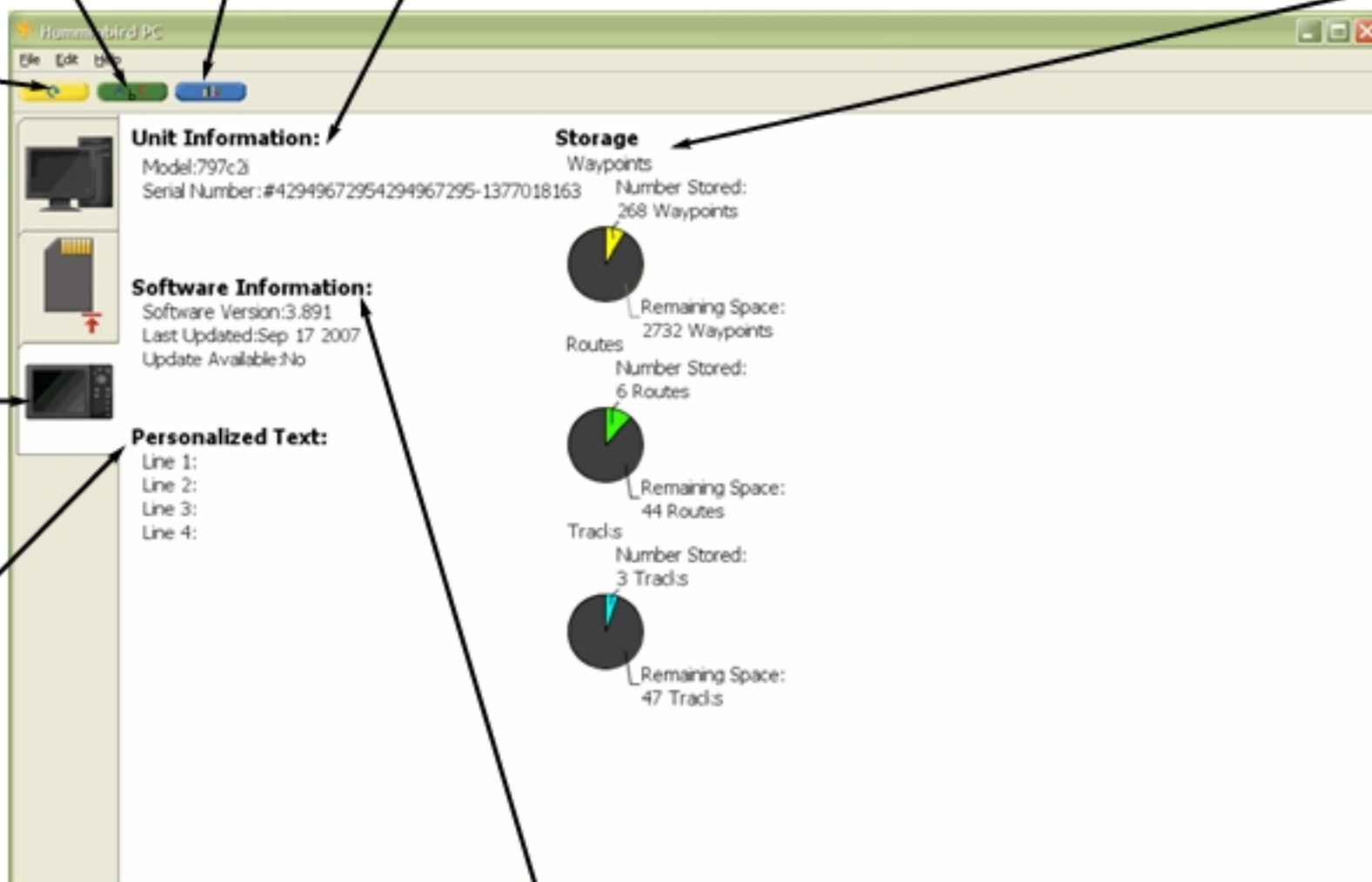
Click this button to create personalized text for your unit splash page.

Storage

Displays pie charts for the Waypoints, Routes, and Tracks that are stored on the unit. Each pie chart displays the space used and space available for each navigation data category.

Update Button:

Click this button to run the software update wizard.



Unit Tab

Personalized Text

Shows the text that will be displayed on the splash screen when the unit is powered on. Click the Customize Button to add or edit text.

Software Information

Software Version: Current version number on the unit.

Last updated: Date of the last software update on the unit.

Update Available: HumminbirdPC™ will search the Internet for the latest software. This feature must be clicked On. See Personalize Text.

Managing the Unit Tab

[Software Update](#)

[Personalize Text](#)

[View Navigation Data](#)

[Upload](#)

[Download](#)

[Transfer Between Devices](#)

Related Topics

[PC Tab](#)

[MMC/SD Tab](#)



HUMMINBIRD®

Help Topics

MMC/SD Tab

When an MMC/SD card is connected to your computer, HumminbirdPC™ will display the MMC/SD Tab. Click the MMC/SD tab to open it and view the card information.

From this tab, you can view navigation data on the card, enter personalized text which will appear on the unit the next time you use the card, and update software. See the illustration below for details on the screen.

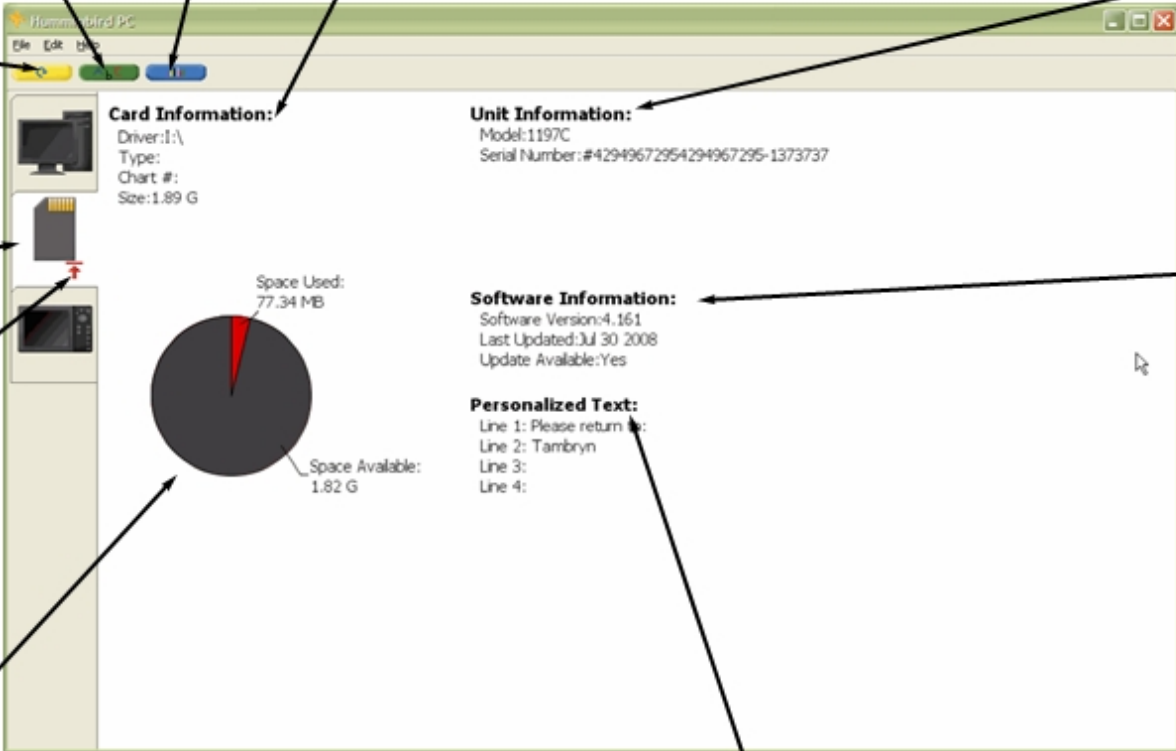
Customize Button
Click this button to create personalized text for your unit splash page.

Data Button
Click this button to view the navigation data on the attached card.

Card Information
Drive: Location of card on your computer.
Type: Card Type
Chart #: Serial Number of chart card if inserted.
Size: MMC/SD Card size

Unit Information
Lists the model and serial number where the card was last installed.

Update Button:
Click this button to run the software update wizard.



MMC/SD Tab

Eject Button
Upload and Download buttons will appear when the PC Tab is active.

Software Information
Software Version: Version number on the unit when the card was last installed.
Last updated: Date of the last software update on the unit where the card was last installed.
Update Available: HumminbirdPC™ will search the Internet for the latest software. This feature must be clicked On. See Personalize Text.

Software Information:
Software Version: 4.161
Last Updated: Jul 30 2008
Update Available: Yes

Personalized Text:
Line 1: Please return to:
Line 2: Tambryn
Line 3:
Line 4:

Pie chart
Shows the space used and space available on the attached card.

Personalized Text
Shows the text that will be displayed on the splash screen when the card is plugged into the unit. Click the Customize Button to add or edit text.

Managing the MMC/SD Tab

[Software Update](#)

[Personalize Text](#)

[View Navigation Data](#)

[Upload](#)

[Download](#)

[Transfer Between Devices](#)

Related Topics

[PC Tab](#)

[Unit Tab](#)

© 2008 Humminbird®, Eufaula AL, USA. All rights reserved.




Help Topics

Upload

To transfer navigation data from your HumminbirdPC™ to a Humminbird® Unit or MMC/SD Card, use the upload function described below.

NOTE: To transfer navigation data from an attached device to HumminbirdPC™, see [Download](#).

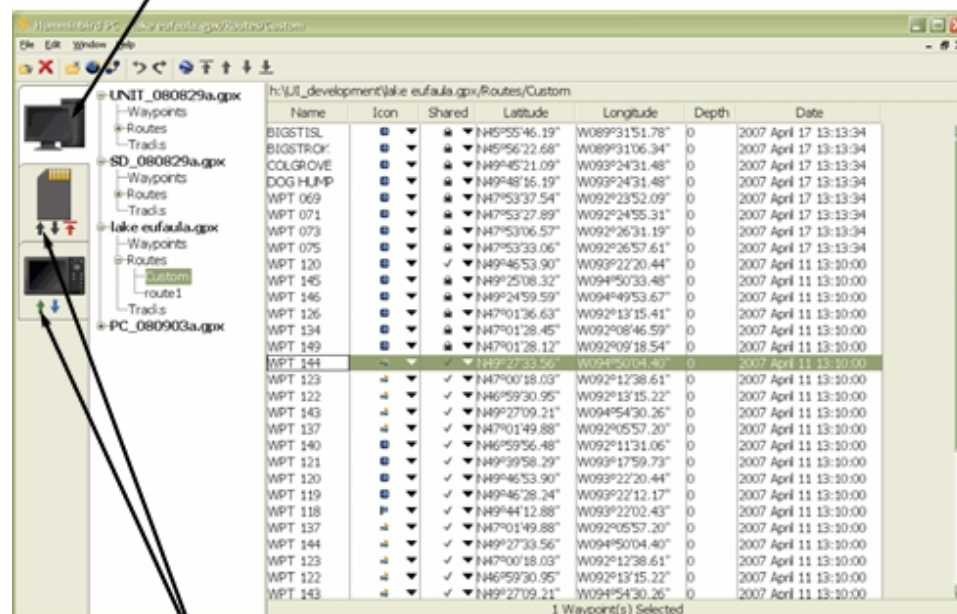
To upload navigation data to a unit or mmc/sd card:

1. Click the PC Tab to work from this tab.
2. Click to highlight the GPX files you want to upload.
- 3a. Click the  Upload button under the MMC/SD Tab or Humminbird® Unit Tab to export the navigation data to that device. *OR*
- 3b. Right-click the MMC/SD Tab or Unit Tab, and select Upload from the shortcut menu. *OR*
- 3c. From the File menu, select Upload.
4. A dialog box will appear to ask how to update navigation data on the device you choose.

Add: Adds the information to the device, creating a copy if necessary.

Replace: Deletes the information on the device and

Make sure the PC
Tab is open



Click the Green Up
arrow to upload to the
device you choose.
The button will turn
gray after the upload is
complete.

replaces it with the new navigation data from HumminbirdPC™.

Cancel: Stops the upload

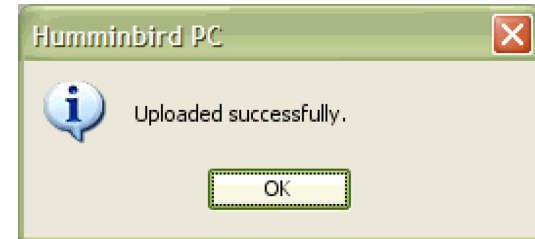
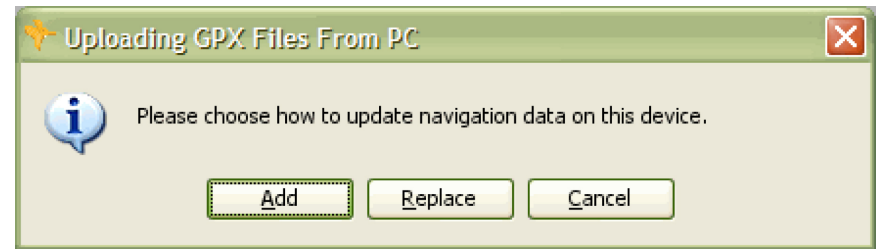
Related Topics

[Download](#)

[GPX Files](#)

[Transfer Between Devices](#)

[View Navigation Data on a Device](#)



© 2008 Humminbird®, Eufaula AL, USA. All rights reserved.



HUMMINBIRD®


Help Topics

Download

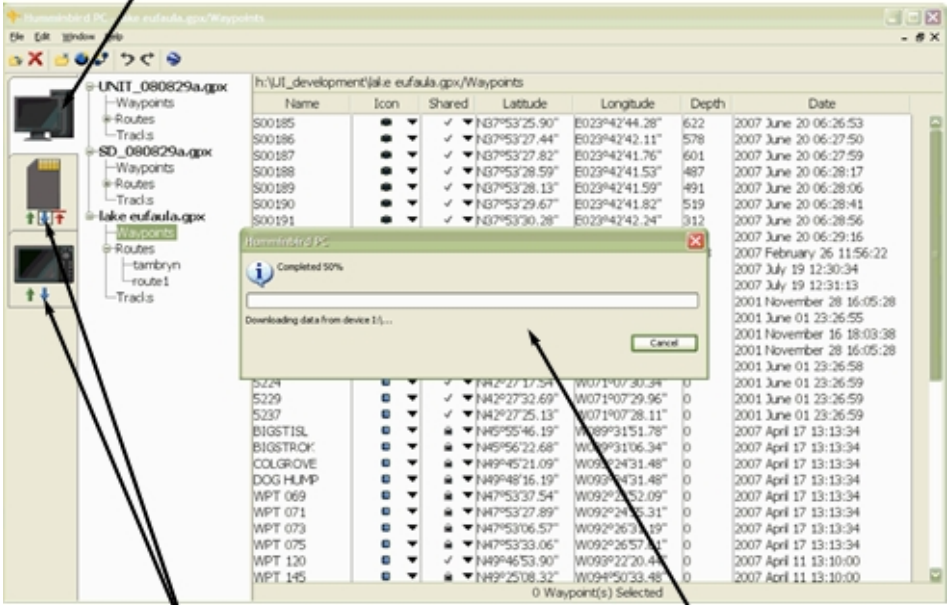
To transfer navigation data from your Humminbird® Unit or MMC/SD Card to HumminbirdPC™, use the download function described below.

NOTE: To transfer navigation data from HumminbirdPC™ to an attached device, see [Upload](#).

To Download Navigation Data to HumminbirdPC™

1. Click the PC Tab to work from this tab.
- 2a. Click the  Download button under the MMC/SD Tab or Humminbird® Unit Tab to import the navigation data from that device. *OR*
- 2b. Right-click the MMC/SD Tab or Unit Tab, and select Download from the shortcut menu. *OR*
- 2c. From the File menu, click Download.
3. A dialog box will appear to show the progress of the download.
4. The downloaded GPX Files will appear in the File Pane. GPX Files are named with the following format: Device_Date.gpx. See [Edit GPX files](#) to edit the file names and organize your navigation data.

Make sure the PC Tab is open



Click the Blue Down arrow to download to HumminbirdPC™. The button will turn gray after the download is complete.

Download Progress

Name	Icon	Shared	Latitude	Longitude	Depth	Date
S00185		✓	N37°53'25.90"	E023°42'44.28"	622	2007 June 20 06:26:53
S00186		✓	N37°53'27.44"	E023°42'42.11"	578	2007 June 20 06:27:50
S00187		✓	N37°53'27.82"	E023°42'41.76"	601	2007 June 20 06:27:59
S00188		✓	N37°53'28.59"	E023°42'41.53"	487	2007 June 20 06:28:17
S00189		✓	N37°53'28.13"	E023°42'41.59"	491	2007 June 20 06:28:06
S00190		✓	N37°53'29.67"	E023°42'41.82"	519	2007 June 20 06:28:41
S00191		✓	N37°53'30.28"	E023°42'42.24"	312	2007 June 20 06:28:56
S224		✓	N42°27'17.54"	W071°07'30.34"	0	2001 June 01 23:26:59
S229		✓	N42°27'32.69"	W071°07'29.96"	0	2001 June 01 23:26:59
S237		✓	N42°27'25.13"	W071°07'28.11"	0	2001 June 01 23:26:59
BIGSTISL		✓	N45°55'46.19"	W099°31'51.78"	0	2007 April 17 13:13:34
BIGSTROR		✓	N45°56'22.68"	W099°31'06.34"	0	2007 April 17 13:13:34
COLGROVE		✓	N49°45'21.09"	W092°24'31.48"	0	2007 April 17 13:13:34
DOG HUMP		✓	N49°48'16.19"	W092°24'31.48"	0	2007 April 17 13:13:34
WPT 069		✓	N47°53'37.54"	W092°24'52.09"	0	2007 April 17 13:13:34
WPT 071		✓	N47°53'27.89"	W092°24'55.31"	0	2007 April 17 13:13:34
WPT 073		✓	N47°53'06.57"	W092°26'31.19"	0	2007 April 17 13:13:34
WPT 075		✓	N47°53'33.06"	W092°26'57.51"	0	2007 April 17 13:13:34
WPT 120		✓	N49°46'53.90"	W099°22'20.44"	0	2007 April 11 13:10:00
WPT 145		✓	N49°25'08.32"	W094°50'33.48"	0	2007 April 11 13:10:00

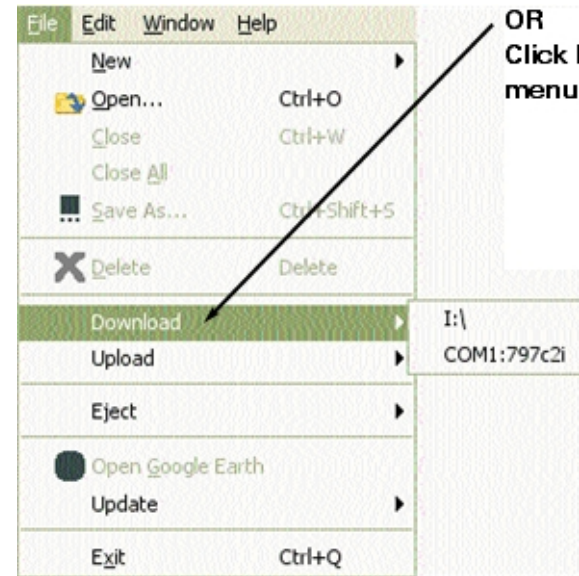
Related Topics

[Upload](#)

[GPX Files](#)

[Transfer Between Devices](#)

[View Navigation Data on a Device](#)



© 2008 Humminbird®, Eufaula AL, USA. All rights reserved.




HUMMINBIRD®

Help Topics

View Navigation Data on the Unit Tab or MMC/SD Tab


HumminbirdPC™ allows you to view the navigation data saved on each attached device.

To view navigation data:

1. In the Unit Tab or MMC/SD Tab, click the  Display Data button on the toolbar.

2. The Data Window will appear and display the saved data on the attached unit or MMC/SD card.

NOTE: The information saved on your unit or MMC/SD card can include waypoints, routes, tracks, snapshots, and recordings. Snapshots and recordings cannot be viewed in HumminbirdPC™.

3. To close the Data Window, click the  in the top right corner.

NOTE: To organize or edit the navigation data, [download](#) the navigation data to the PC Tab.

Managing Navigation Data

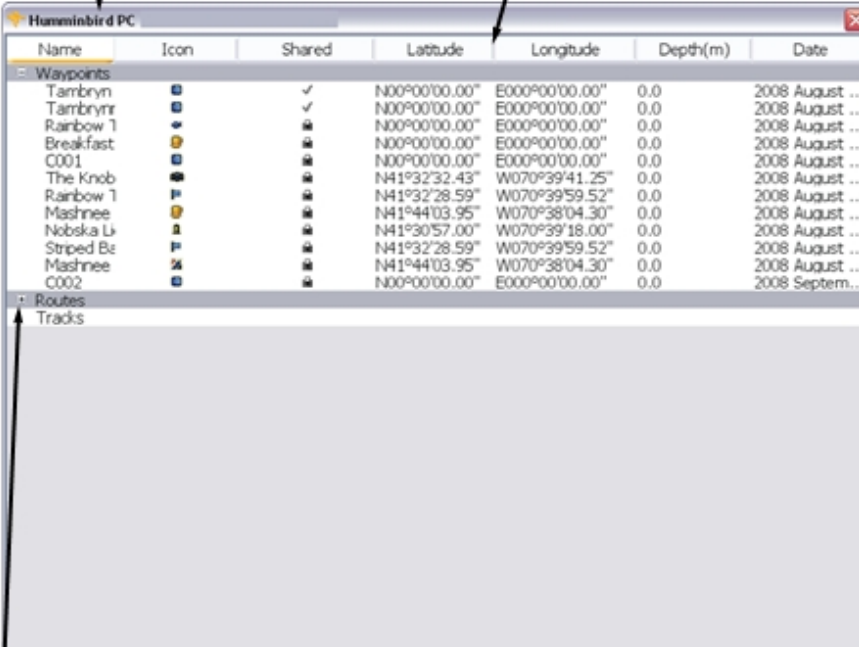
[Download](#)

[Upload](#)

Data Window

Displays the saved navigation information from the Unit or MMC/SD Card

Hover your mouse between columns until a double-arrow appears to change column size.



Name	Icon	Shared	Latitude	Longitude	Depth(m)	Date
Waypoints						
Tambryn		✓	N00°00'00.00"	E000°00'00.00"	0.0	2008 August ...
Tambryn		✓	N00°00'00.00"	E000°00'00.00"	0.0	2008 August ...
Rainbow 1		✓	N00°00'00.00"	E000°00'00.00"	0.0	2008 August ...
Breakfast		✓	N00°00'00.00"	E000°00'00.00"	0.0	2008 August ...
C001		✓	N00°00'00.00"	E000°00'00.00"	0.0	2008 August ...
The Knob		✓	N41°32'32.43"	W070°39'41.25"	0.0	2008 August ...
Rainbow 1		✓	N41°32'28.59"	W070°39'59.52"	0.0	2008 August ...
Mashnee		✓	N41°44'03.95"	W070°38'04.30"	0.0	2008 August ...
Nobska Li		✓	N41°30'57.00"	W070°39'18.00"	0.0	2008 August ...
Striped Be		✓	N41°32'28.59"	W070°39'59.52"	0.0	2008 August ...
Mashnee		✓	N41°44'03.95"	W070°38'04.30"	0.0	2008 August ...
C002		✓	N00°00'00.00"	E000°00'00.00"	0.0	2008 Septem...
Routes						
Tracks						

Click the + plus sign to see data under each category.

Related Topics

[Unit Tab](#)

[MMC/SD Tab](#)

[PC Tab](#)

© 2008 Humminbird®, Eufaula AL, USA. All rights reserved.




HUMMINBIRD®

Help Topics

Update Software

Use HumminbirdPC™ to update Humminbird® unit software quickly and easily.

To update software:

1. In the Unit Tab or MMC/SD Tab, click the  Update button on the toolbar.
2. HumminbirdPC™ will start the Humminbird Software Update Wizard. The Wizard will search the Internet for the latest software version for your unit and guide you through the update.
3. If you run the software update from the Unit tab, your Humminbird® unit will complete installation the next time you power on the control head. If you run the software update from the MMC/SD Tab, you will need to install the card in your Humminbird® control head to complete installation.

NOTE: Your computer must be connected to the Internet. Also, see [Preferences](#) to confirm that HumminbirdPC™ can access the Internet.

Related Topics

[Unit Tab](#)

[MMC/SD Tab](#)

[PC Tab](#)






HUMMINBIRD®

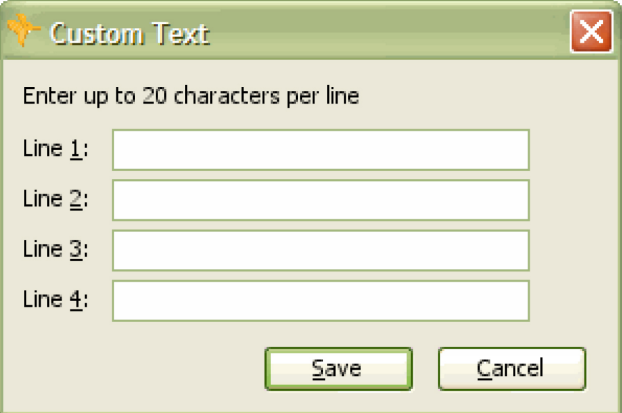
Help Topics

Personalize Text

Add text to the attached MMC/SD card or directly to your unit, and the next time you power up your unit with the card installed, the text will appear on the splash screen.

To personalize splash screen text:

1. In the Unit Tab or MMC/SD Tab, click the  Customize button on the toolbar.
2. The Custom Text dialog box will appear. Click each row to begin typing text. You can enter up to 20 characters per line.
3. When the text is complete, click the Save button, or click the Cancel button to exit.



Custom Text

Enter up to 20 characters per line

Line 1:

Line 2:

Line 3:

Line 4:

Save Cancel

Related Topics

[Unit Tab](#)

[MMC/SD Tab](#)

[PC Tab](#)



HUMMINBIRD®

Help Topics

About GPX Files

GPX Files store the waypoints, routes, and tracks from your Humminbird® unit or MMC/SD card. Once downloaded to HumminbirdPC™, you can edit the names of saved files and edit the navigation data (waypoints, routes, and tracks) in each file.

You can also create a new GPX file, name it, and add waypoints, routes, and tracks before you hit the water.

If you change the name, the file maintains the extension (*.gpx), which helps you search for files on your computer.

Managing GPX Files

[Add/Delete GPX Files](#)

[Open/Close GPX Files](#)

[Edit GPX Files](#)

[Share GPX Files](#)

[Download](#)

[Upload](#)

Related Topics

[Waypoints](#)

[Routes](#)

[Tracks](#)

PC Tab open with GPX files displayed

The screenshot shows the Humminbird PC software interface. The title bar reads "Humminbird PC - lake eufaula.gpx/Routes/Custom". The menu bar includes "File", "Edit", "Window", and "Help". The toolbar contains various icons for file operations. The main area is divided into a tree view on the left and a list view on the right.

The tree view shows a hierarchy of files:

- UNIT_080829a.gpx
 - Waypoints
 - Routes
 - Tracks
- SD_080829a.gpx
 - Waypoints
 - Routes
 - Tracks
- lake eufaula.gpx
 - Waypoints
 - Routes
 - Custom
 - route1
 - Tracks
- PC_080903a.gpx

The list view on the right shows a table of waypoints:

Name	Icon	Sh
BIGSTISL	📍	▼
BIGSTROK	📍	▼
COLGROVE	📍	▼
DOG HUMP	📍	▼
WPT 069	📍	▼
WPT 071	📍	▼
WPT 073	📍	▼
WPT 075	📍	▼
WPT 120	📍	▼
WPT 145	📍	▼
WPT 146	📍	▼
WPT 126	📍	▼
WPT 134	📍	▼
WPT 149	📍	▼
WPT 144	📍	▼

Click the plus sign to view the waypoints, routes, and tracks in each file.

You can create new GPX Files, and

You can edit the name of GPX Files and organize the waypoints, routes, and tracks in each

HumminbirdPC™
automatically assigns
a name which
includes the Device
and Date from which
the GPX File was
created.

file.

© 2008 Humminbird®, Eufaula AL, USA. All rights reserved.




HUMMINBIRD®

Help Topics

Add or Delete GPX Files


You can easily create or delete GPX Files using the HumminbirdPC™ toolbar buttons and menus. As soon as you add or delete a GPX File, your changes are saved immediately.

To create a new GPX File:

- 1a. On the toolbar, click the  New File button. *OR*
 - 1b. On the File menu, click New>New File. *OR*
 - 1c. [Right-click](#) the PC Tab File Pane, and select New>New File from the shortcut menu
2. A new file *.gpx will appear at the bottom of the File Pane list. GPX Files are named with the following format: Device_Date.gpx. Each file is populated with a waypoints, routes, and tracks section. To customize the new file information, see [Edit GPX Files](#).

To delete a GPX File:

NOTE: When you choose to delete a GPX file, all the waypoints, routes, and tracks in that file will also be deleted.

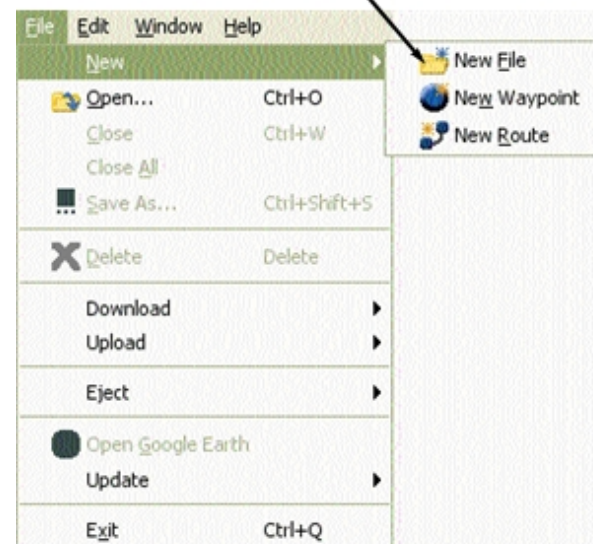
- 1a. Click the GPX File you want to delete to highlight it. Then, click the  Delete button. *OR*



Click the New File button on the toolbar

OR

Click File>New>New File



OR

Right-Click the PC Tab File Pane to access the shortcut menu

1b. Right-click the GPX File you want to delete, and select Delete from the shortcut menu.

2. Your changes will be saved immediately.

Managing GPX Files

[About GPX Files](#)

[Open/Close GPX Files](#)

[Edit GPX Files](#)

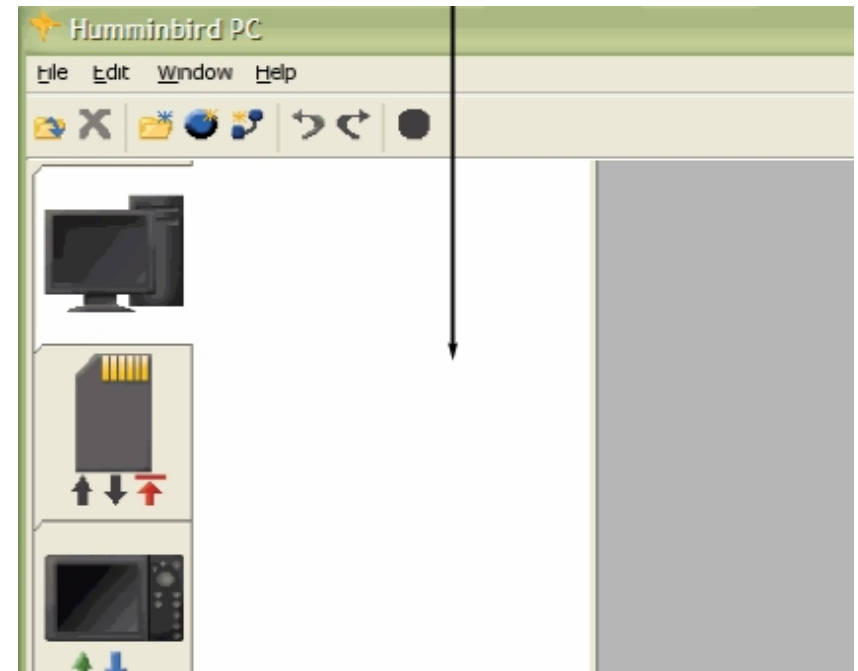
[Share GPX Files](#)

Related Topics

[Waypoints](#)

[Routes](#)

[Tracks](#)



© 2008 Humminbird®, Eufaula AL, USA. All rights reserved.




Help Topics

Open/Close GPX Files

GPX files are saved on your computer. If you open HumminbirdPC™, and the File Pane is blank, you will need to open the GPX Files from your computer or from an attached Humminbird® unit or MMC/SD Card.

To open a saved GPX File:

1. On the File menu, click Open.

NOTE: You can also click the  Open button from the toolbar or right-click in the file pane to select Open from the shortcut menu.

2. The Open dialog box will display. Browse to the location where you saved your GPX files.

NOTE: HumminbirdPC™ automatically saves your GPX files to the following directory on your PC:

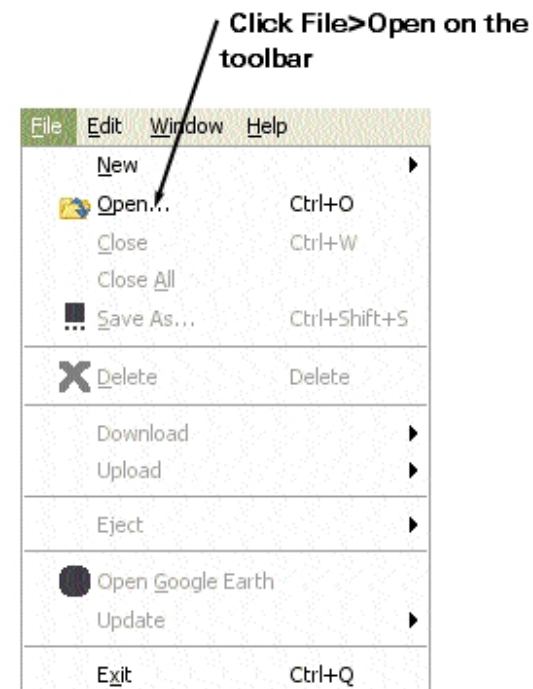
[\[User Directory\]\My_HumminbirdPC\GPX_Files\](#)

To change the location, see [Preferences](#).

3. At the bottom of the Open dialog box, make sure GPX File (*.gpx) or All File Types is selected in the Files of Type box.

4. Click the File_Name.gpx that you want to open, and click the Open button.

Opening a GPX File from the File Menu



NOTE: To import GPX files from other devices, see [Download](#).

To close a GPX File:

1. In the File Pane, click the file name you want to close.
2. On the File menu, click Close. To close all of the files in HumminbirdPC™, click File>Close All.

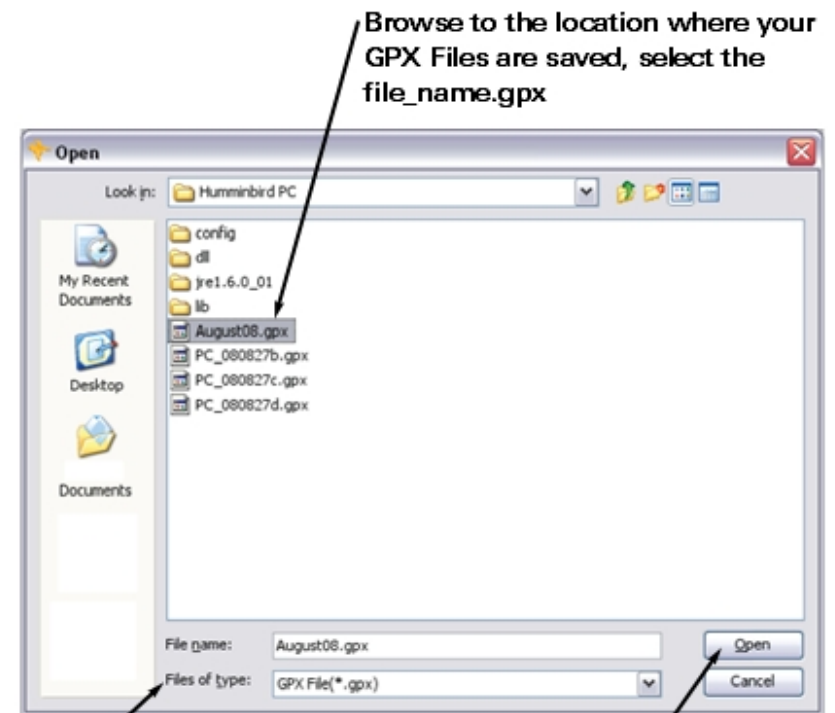
NOTE: You can also right-click on the GPX file name to select Close from the shortcut menu. Although the file is closed in HumminbirdPC™, it will be saved on your computer.

Managing GPX Files

- [About GPX Files](#)
- [Add/Delete GPX Files](#)
- [Upload GPX Files](#)
- [Download GPX Files](#)
- [Edit GPX Files](#)
- [Share GPX Files](#)

Related Topics

- [Waypoints](#)
- [Routes](#)
- [Tracks](#)



Make sure GPX File(*.gpx) or All File Types is selected in the Files of Type dialog box

Click Open

© 2008 Humminbird®, Eufaula AL, USA. All rights reserved.

File Pane with GPX Files Open

The screenshot shows the Humminbird PC software interface. The title bar reads "Humminbird PC - lake eufaula.gpx/Routes/Custom". The menu bar includes "File", "Edit", "Window", and "Help". The toolbar contains icons for file operations and navigation. The file pane on the left shows a tree view of GPX files:

- UNIT_080829a.gpx
 - Waypoints
 - Routes
 - Tracks
- SD_080829a.gpx
 - Waypoints
 - Routes
 - Tracks
- lake eufaula.gpx
 - Waypoints

On the right, a table displays the contents of the selected file:

h:\UI_development\lake eufaula		
Name	Icon	Sh
BIGSTISL		▼
BIGSTROK		▼
COLGROVE		▼
DOG HUMP		▼
WPT 069		▼
WPT 071		▼
WPT 073		▼
WPT 075		▼



HUMMINBIRD®

Help Topics

Edit GPX Files

You can change the GPX File names.

You can also add new or saved waypoints, new or saved routes, or saved tracks (see Related Topics below).

To change the GPX file name:

1. Right-click the GPX File you want to rename, and select Edit from the shortcut menu. The current GPX file name will be highlighted.
2. Type the new name you want to give your GPX file.
3. Click out of the cell, and the new name will be saved.

Managing GPX Files

[About GPX Files](#)

[Open/Close GPX Files](#)

[Add/Delete GPX Files](#)

[Share GPX Files](#)

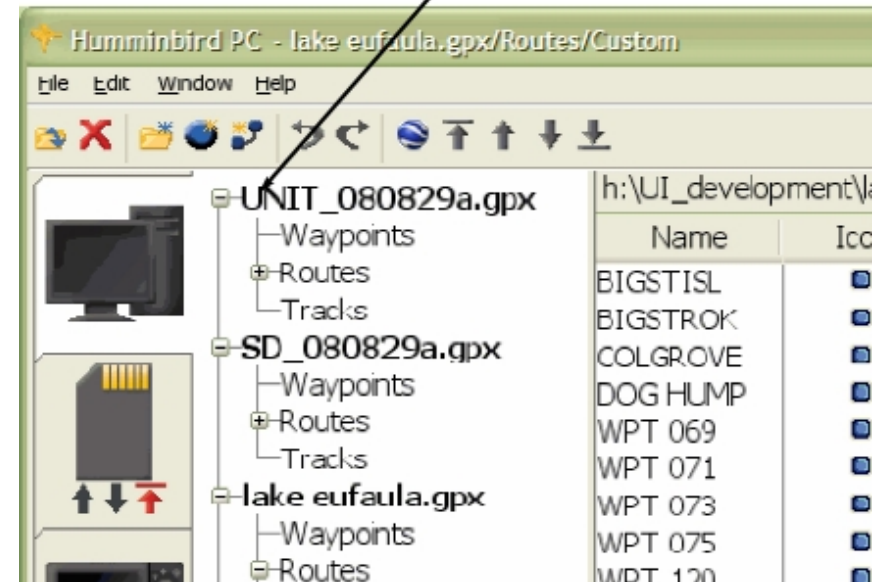
Related Topics

[Waypoints](#)

[Routes](#)

[Tracks](#)

Right-click the GPX File to access the shortcut menu.





HUMMINBIRD®

Help Topics

Share GPX Files

GPX Files can be moved between devices without downloading to HumminbirdPC™.

To copy GPX Files between devices:

1. Attach the devices to your computer that will share files. In the illustration on this page, a Humminbird® unit and an SD card are attached to the computer.

NOTE: If you cannot view the Unit Tab, make sure the unit is attached to your PC and powered on.

2. Use the Drag & Drop function to copy your navigation data from one device to the other.

Highlight: Click the device tab you want to copy.

Drag: Hold down the left mouse button, and drag the mouse pointer to the tab where you want to transfer the data.



A plus sign will be displayed under the mouse pointer while you're dragging it across the screen, which indicates that data is attached.



An unavailable sign will be displayed on the screen if the tab cannot receive the data.

Drop: When the mouse pointer reaches the new tab location, release the left mouse button to copy the data into the new device.

3. A message will display "Copying this file will delete and replace all of the

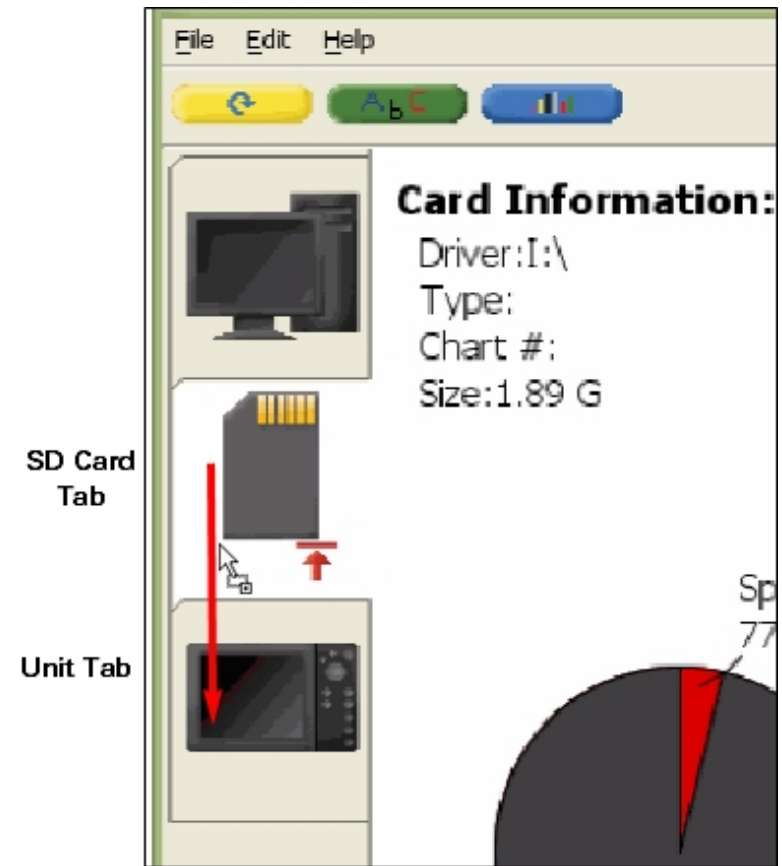
information in this source. Do you want to continue?" Click Yes to proceed, and all data on the new device will be overwritten. Click Cancel to prevent copying the files.

Managing GPX Files

- [About GPX Files](#)
- [Open/Close GPX Files](#)
- [Add/Delete GPX Files](#)
- [Download](#)
- [Upload](#)

Related Topics

- [Waypoints](#)
- [Routes](#)
- [Tracks](#)



© 2008 Humminbird®, Eufaula AL, USA. All rights reserved.



Help Topics

About Waypoints

A Waypoint is the saved position (latitude, longitude) of a point of interest that is stored in a GPS receiver's memory. This can include a marker buoy, dock, fishing hole, or anywhere else you might want to revisit.

Humminbird® products offer the ability to name and assign an icon to the saved position as well as share waypoints across the Humminbird® InterLink™ accessory (optional purchase required). Depth, Date, and Time of Day when the waypoint was created are also saved. HumminbirdPC™ lets you customize this information, share waypoints between routes, and view your waypoints in Google Earth™.

Managing Waypoints

[Add/Delete Waypoints](#)

[Edit Waypoints](#)

[Share/Move Waypoints](#)

[Change Waypoint Travel Order](#)

Related Topics

[Routes](#)

[Tracks](#)

[GPX Files](#)


[Google Earth™](#)




Add or Delete Waypoints

You can easily create a new waypoint or delete a waypoint using the HumminbirdPC™ toolbar buttons and menus. As soon as you add or delete a waypoint, your changes are saved immediately.

To add a new waypoint to a waypoint list or route:

- 1a. On the toolbar, click the  Waypoint button. *OR*
 - 1b. On the File menu, click New>New Waypoint. *OR*
 - 1c. Right-click anywhere in the active window, and select New Waypoint from the shortcut menu.
2. A new waypoint will appear at the bottom of the active waypoint list. A numerical name is automatically assigned to the new waypoint. To customize the new waypoint information, see [Edit Waypoints](#).

To delete a waypoint:

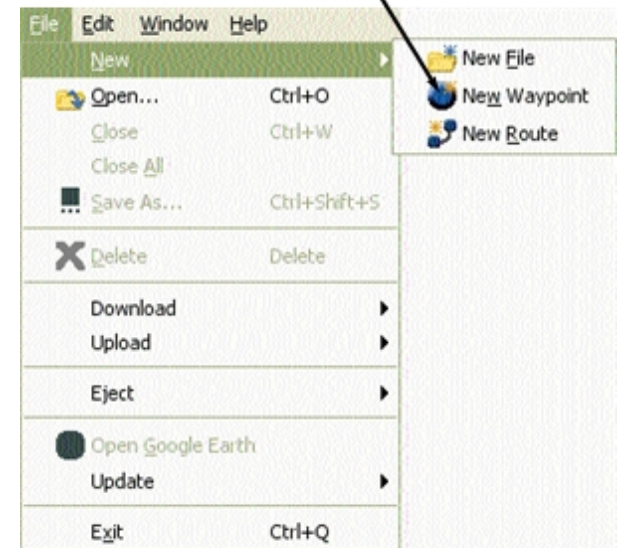
- 1a. Click the waypoint you want to delete to highlight it. Then, click the  Delete button on the toolbar or press the Delete key on the keyboard. *OR*
 - 1b. Right-click the waypoint you want to delete, and select Delete from the shortcut menu.
2. Your changes will be saved immediately.



Click the waypoint button on the toolbar

OR

Click File>New>New Waypoint



Managing Waypoints

[About Waypoints](#)

[Edit Waypoints](#)

[Share/Move Waypoints](#)

[Change Waypoint Travel Order](#)

Related Topics

[Routes](#)

[Tracks](#)

[GPX Files](#)

[Google Earth™](#)

© 2008 Humminbird®, Eufaula AL, USA. All rights reserved.



HUMMINBIRD®

Help Topics

Open Multiple Windows

HumminbirdPC™ allows you to view multiple windows on the screen, which is useful for comparing information or moving navigation data between files.


To open multiple windows:

1a. In the File Pane, right-click the file you want to display, and click Open in a New Window in the shortcut menu. Repeat this step for each file you want to open, *OR*

1b. In the File Pane, double-click the first file you want to use. This will open two windows of the same file. Then, return to the File Pane and click (a single-click) the next file you want to use.

2. The two (or more) windows will be displayed next to each other.

To close a window:

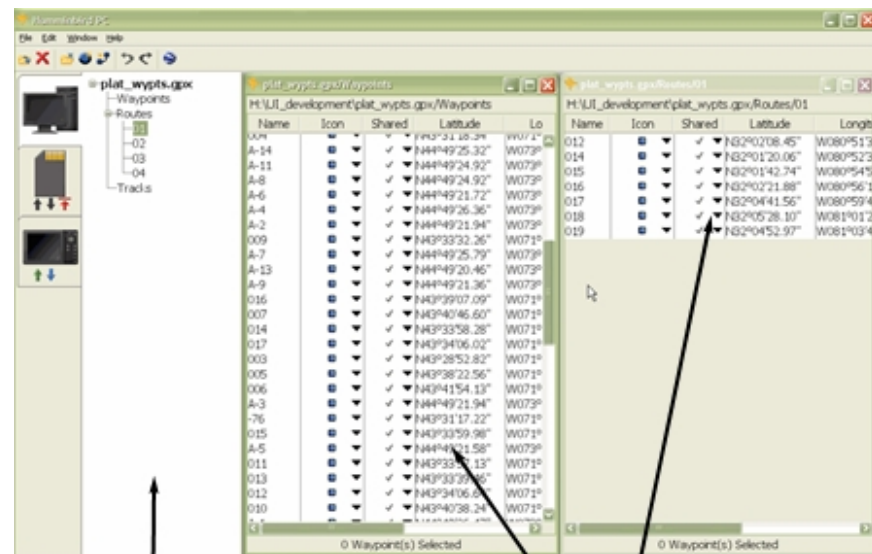
1. Click the  Close button in the top right corner of the active window.

2. The window will close, and your changes will be saved.

Related Topics

[Share/Move Navigation Data](#)

[Open/Close GPX Files](#)



File Pane

Active Windows

[Exit HumminbirdPC™](#)

© 2008 Humminbird®, Eufaula AL, USA. All rights reserved.



HUMMINBIRD®

Help Topics

Edit Waypoints

You can edit a waypoint's name, icon, position, and whether it can be shared across the Humminbird® InterLink™ accessory.

NOTE: InterLink™ is an optional purchase accessory.

To edit waypoint information:

1. Right-click the waypoint cell you want to edit, and select Edit from the shortcut menu, or simply double-click the cell. For example, if you want to edit the waypoint name, right-click on the current name. You can make changes as follows:

Name: Type directly into the cell to customize the name.

Icon: Click the down arrow to access the Icon drop-down box. Highlight a choice and click it to set the icon for that waypoint.

NOTE: To assign an icon to more than one waypoint at a time, click the rows while holding down the Ctrl key, then right-click, and select Change Icon.

Shared: Click the down arrow to access the Share drop-down box. Selecting the check mark will allow the waypoint to be shared across the InterLink™ accessory (optional purchase required). Selecting the lock symbol will prevent the waypoint from being shared. If the waypoint is part of a shared route, it cannot be locked and vice versa.

Latitude/Longitude: Type directly into the latitude and longitude cells to set or change the waypoint position.

Depth: If the waypoint was marked from a Sonar view, the depth will be displayed in the Depth column. This information cannot be changed.

Date: The date the waypoint was created. This information cannot be changed.

Name	Icon	Shared	Latitude	Longitude	Depth	Date
001	✖	✓	N11°18.92"	W111°48'10.58"	0	2004 July 19 12:31:23
002	✖	✓	N20°12.12"	W080°21'51.70"	0	2004 July 19 12:33:55
003	✖	✓	N02°05.78"	W111°17'22.67"	0	2004 July 19 12:33:37
004	✖	✓	N02°35.05"	W120°01'14.66"	0	2004 July 19 12:36:59
3D2	✖	✓	N02°59.03"	W122°50'19.43"	608	2004 July 19 12:35:12
3D1	✖	✓	N32°48.98"	W122°12'05.47"	0	2004 July 19 12:35:51
007	✖	✓	N54°34.16"	W077°29'41.10"	1395	2004 July 19 12:30:12
008	✖	✓	N43°34.00"	W077°46'46.92"	0	2004 July 19 12:31:53
009	✖	✓	N43°34.32"	W077°46'48.65"	1233	2004 July 19 12:30:47
S00238	✖	✓	N43°34.03"	W077°46'49.55"	670	2004 July 19 12:30:58
011	✖	✓	N46°42.71"	W079°54'34.78"	0	2004 July 19 12:30:03
012	✖	✓	N32°02'08.45"	W080°51'36.83"	0	2004 July 19 12:31:07
013	✖	✓	N32°19'22.73"	W080°44'01.36"	0	2004 July 19 12:37:54
014	✖	✓	N32°01'20.06"	W080°52'36.08"	0	2004 July 19 12:31:24
015	✖	✓	N32°01'42.74"	W080°54'54.11"	0	2004 July 19 12:31:37
016	✖	✓	N32°02'21.88"	W080°56'19.50"	0	2004 July 19 12:31:41
017	✖	✓	N32°04'41.56"	W080°59'47.58"	0	2004 July 19 12:31:48
018	✖	✓	N32°05'28.10"	W081°01'21.72"	0	2004 July 19 12:32:08
019	✖	✓	N32°04'52.97"	W081°03'46.30"	0	2004 July 19 12:32:22
A-10	✖	✓	N44°49'20.89"	W073°14'34.62"	0	2007 March 23 10:09
021	✖	✓	N32°45'56.12"	W079°53'39.66"	0	2004 July 19 12:30:05
022	✖	✓	N32°47'00.89"	W079°52'44.51"	0	2004 July 19 12:30:08
004	✖	✓	N43°31'18.34"	W071°29'16.87"	0	2007 March 23 10:09
A-14	✖	✓	N44°49'25.32"	W073°14'38.40"	0	2007 March 23 10:09
A-11	✖	✓	N44°49'24.92"	W073°14'35.48"	0	2007 March 23 10:09
A-8	✖	✓	N44°49'24.92"	W073°14'32.89"	0	2007 March 23 10:09
A-6	✖	✓	N44°49'21.72"	W073°14'30.26"	0	2007 March 23 10:09
A-4	✖	✓	N44°49'26.36"	W073°14'29.11"	0	2007 March 23 10:09
A-2	✖	✓	N44°49'21.94"	W073°14'25.76"	0	2007 March 23 10:09

2. Once you click out of a cell, the new information will be saved.

NOTE: If you've copied a waypoint into multiple locations within a GPX file, the changes you make will change all of the waypoint copies. If you only want to change a single waypoint, it is better to create a new waypoint (see [Add Waypoints](#)).

NOTE: The icon, latitude and longitude of a Man Overboard (MOB) waypoint cannot be changed.

Managing Waypoints

[Add/Delete Waypoints](#)

[About Waypoints](#)

[Share/Move Waypoints](#)

[Change Travel Order](#)

Related Topics

[Routes](#)

[Tracks](#)

[GPX Files](#)

[Google Earth™](#)

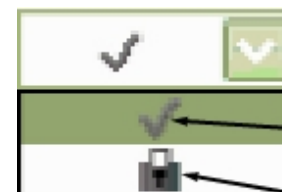
© 2008 Humminbird®, Eufaula AL, USA. All rights reserved.



Icon Drop-Down Box

Click an icon to choose it. You can also view the icon in Google Earth™.

Use the scroll key to view all the choices.



InterLink™ Accessory Share Drop-Down Box

share

lock



HUMMINBIRD®

Help Topics

About Routes

A Route is a series of waypoints linked together in a specific sequence to define a navigation path between two points, and it is saved in the fishfinder's memory. Routes consist of a Start Waypoint, an End Waypoint, and a series of waypoints in between.

HumminbirdPC™ lets you customize this information, share and move waypoints between routes, change the travel order, and view routes in Google Earth™.

When you highlight a Route, the waypoints are displayed in the active window.

Managing Routes

[Add/Delete Routes](#)

[Edit Routes](#)

[Change Travel Order](#)

[Share/Move Routes](#)

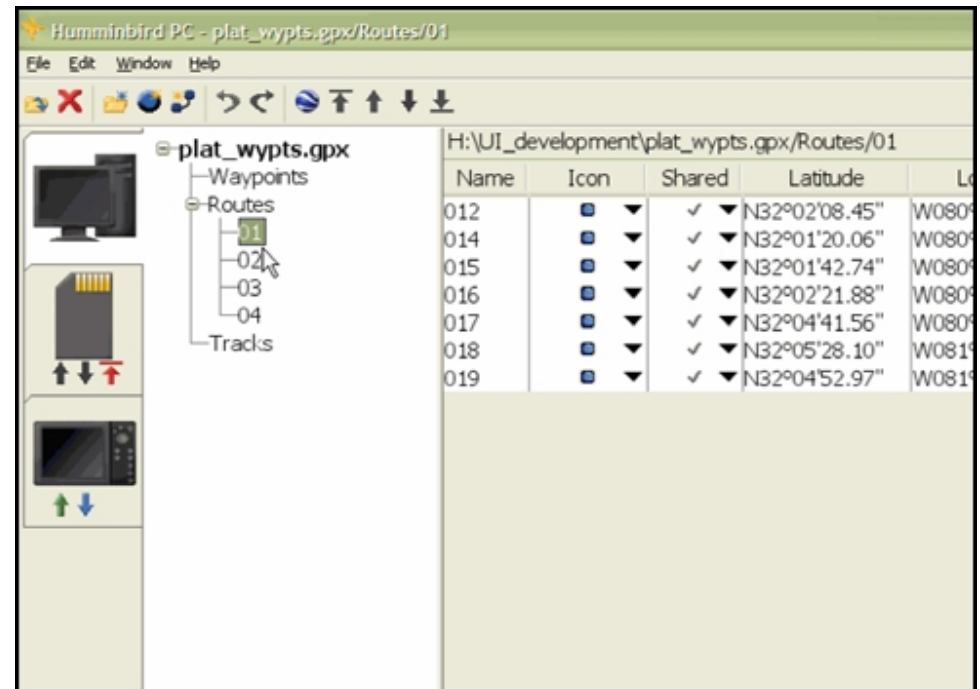
Related Topics

[Waypoints](#)

[Tracks](#)

[GPX Files](#)

[Google Earth™](#)






Add or Delete Routes

You can easily create a new route or delete a route using the HumminbirdPC™ toolbar buttons and menus. As soon as you add or delete a route, your changes are saved immediately.

To add a new route:

- 1a. On the toolbar, click the  Route button. *OR*
 - 1b. On the File menu, click New>New Route. *OR*
 - 1c. Choose the GPX file to which you want to add the route, and right-click Routes under that file. Select New Route from the shortcut menu.
2. A new route will appear under the routes list. A numerical name is automatically assigned to the new route. See [Add Waypoints](#) to add new waypoints to the route or move ([Drag & Drop](#) function) saved waypoints into the route. To customize the new blank route, see [Edit Routes](#).

To create a new route with saved waypoints:

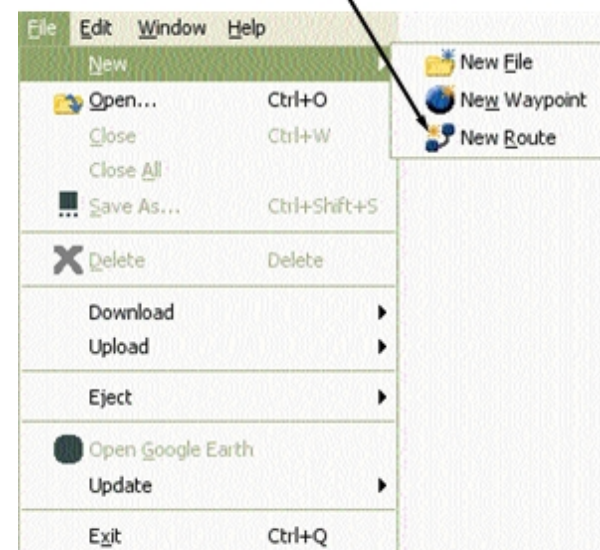
1. Open the GPX file to which you want to add the route, and click the Waypoints list to open the waypoints active window.
2. Click the first waypoint you want to add to the route. Then, hold the Ctrl key down and continue to click waypoints until you have highlighted all the waypoints you want to include.



Click the Route button on the toolbar

OR

Click File>New>New Route




3. Right-click anywhere on the highlighted waypoints, and click Add to New Route in the shortcut menu. A new route will appear under the active routes list. A numerical name is automatically assigned to the new route. See [Add Waypoints](#) to add new waypoints to the route or [move](#) additional saved waypoints into the route. To customize the new route, see [Edit Routes](#).

To delete a route:

1a. In the File Pane, click the route you want to delete to highlight it. Then, click the

 Delete button on the toolbar or press the Delete key on the keyboard. *OR*

1b. In the File Pane, right-click the route you want to delete, and select  Delete from the shortcut menu.

2. Your changes will be saved immediately.

Managing Routes

[About Routes](#)

[Edit Routes](#)

[Add Waypoints](#)

[Change Travel Order](#)

[Share/Move Routes](#)

Related Topics

[Waypoints](#)

[Tracks](#)

[GPX Files](#)

[Google Earth™](#)



Help Topics

Edit Routes



You can edit a route's name, waypoint travel order, and whether it can be shared. You can also add or delete waypoints within a route (see [Add Waypoints](#)).

To edit route information:

1. In the File Pane, right-click the route you want to edit. A shortcut menu will appear, and you can make changes as follows:

Name: Select Edit from the shortcut menu, and then type directly into the route cell to customize the name.

Shared: Select Change Shared Status from the shortcut menu, and then choose Shared or Locked. Selecting the check mark will allow the route to be shared across the InterLink™ accessory (optional purchase required). Selecting the lock symbol will prevent the route from being shared.

Travel Order: In the Active Window, right-click the waypoint you want to move, and select Move. Then, click the   Arrow buttons on the toolbar to move the waypoint up or down in the route travel order. See [Change Travel Order](#) for more information.

2. Once you complete your change, the new information will be saved.

Managing Routes

[About Routes](#)

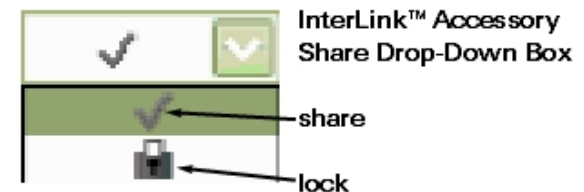
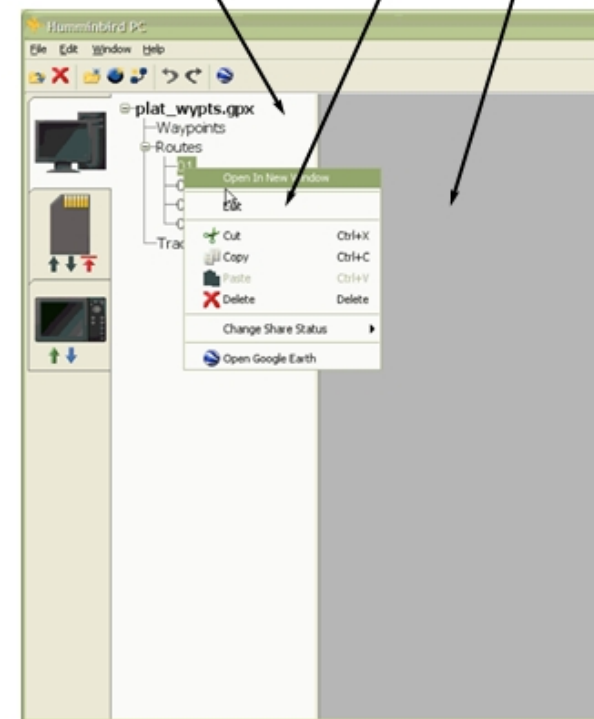
[Add/Delete Routes](#)

[Edit Routes](#)

[Change Travel Order](#)

[Share/Move Routes](#)

File Pane
Shortcut menu with editing choices
Active Window



 Moves the waypoint to the FIRST waypoint position

Related Topics

[Waypoints](#)

[Tracks](#)

[GPX Files](#)

[Google Earth™](#)

- **in the route**
- ↓ **Moves the waypoint to the LAST waypoint position in the route.**
- ↓ **Moves the waypoint DOWN one position in the route order**
- ↑ **Moves the waypoint UP one position in the route order**

© 2008 Humminbird®, Eufaula AL, USA. All rights reserved.



HUMMINBIRD®

Help Topics

Change Travel Order

You can change the travel order of your saved routes by moving the waypoints up or down in the list.

To change the travel order in a route:

1. In the File Pane, click to open the Route you want to change.
2. In the active window, click the waypoint you want to move.
- 3a. Click the Arrow buttons on the toolbar to move the waypoint up or down in the route travel order.

OR

- 3b. Right-click the waypoint, and select MOVE from the shortcut menu. Then, select a Move icon from the submenu.



Moves the waypoint to the **FIRST** waypoint position in the route



Moves the waypoint to the **LAST** waypoint position in the route.



Moves the waypoint **DOWN** one position in the route order



Moves the waypoint **UP** one position in the route order

Managing Routes

[Add/Delete Routes](#)

[Edit Routes](#)

[Share Waypoints](#)

[Share/Move Routes](#)

Related Topics

[Waypoints](#)

[Tracks](#)

[GPX Files](#)

[Google Earth™](#)



HUMMINBIRD®

Help Topics

About Tracks

A Track is a series of saved points that define the past path of the boat. These Track Points are saved at regular time intervals. Tracks are a useful and quick method to see where you've been, and an easy guide to follow to get you back to the starting point.

HumminbirdPC™ allows you to view your track information in the Active Window. You can also share tracks between files, delete tracks from a GPX File, and view your tracks in Google Earth™.

Managing Tracks

[Share Tracks](#)

[Delete Tracks](#)

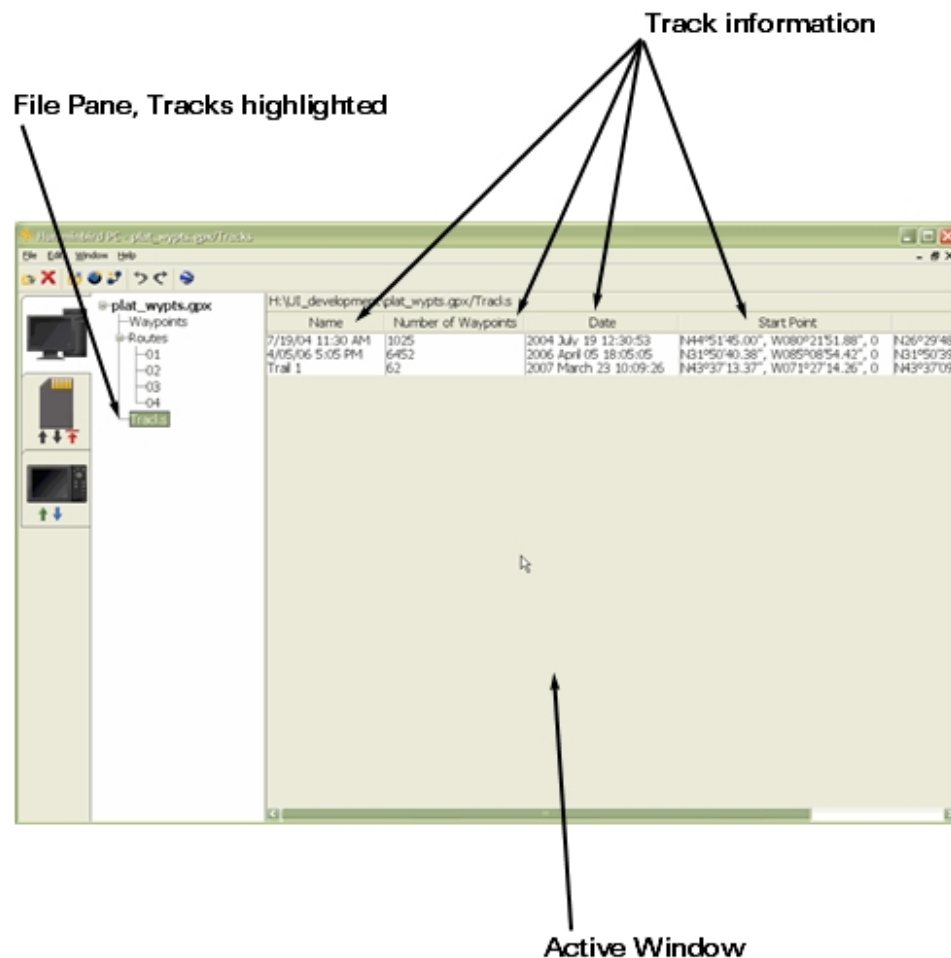
Related Topics

[GPX Files](#)

[Waypoints](#)

[Routes](#)

[Google Earth™](#)






HUMMINBIRD®

Help Topics

Delete Tracks

Delete a track by using the HumminbirdPC™ toolbar buttons and menus. HumminbirdPC™ saves your changes immediately.

To delete a track:

1a. Click the track you want to delete to highlight it. Then, click the  Delete button on the toolbar or press the Delete key on the keyboard.

OR

1b. Right-click the track you want to delete, and select Delete from the shortcut menu.

2. Your changes will be saved immediately.

Managing Tracks

[About Tracks](#)

[Share Tracks](#)

Related Topics

[Waypoints](#)

[Routes](#)
[Google Earth™](#)

© 2008 Humminbird®, Eufaula AL, USA. All rights reserved.



HUMMINBIRD®

Help Topics

Share or Move Navigation Data

Simply use Drag & Drop or Copy & Paste- Your waypoints, routes, and tracks can be easily shared or moved between GPX Files in HumminbirdPC™.

About Sharing and Moving:

You can share or move waypoints, routes, and tracks in three ways:

- ❶ From one file in the File Pane into another file in the Pane
- ❷ From the active window into a new file in the File Pane
- ❸ From one active window into another active window.

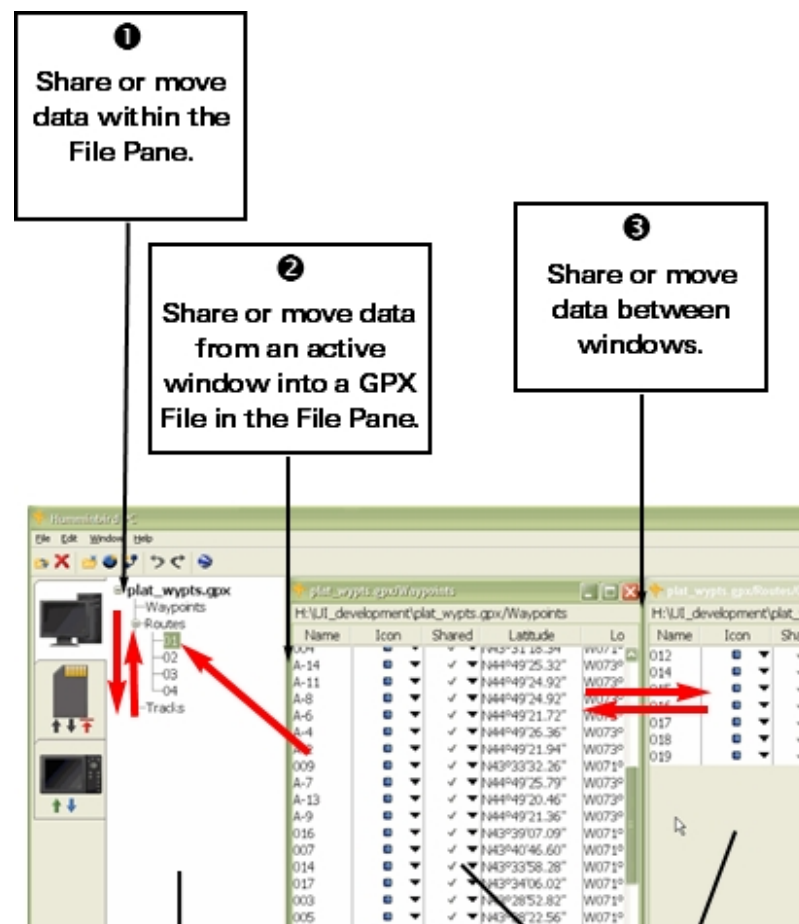
NOTE: The instructions below describe how to share or move waypoints. The same instructions can be applied to routes and tracks.

Drag & Drop (share)

1. Highlight: Click the waypoint you want to share.
2. Drag: Hold down the left mouse button, and drag the mouse pointer to the GPX File location in the File Pane or to the active window where you want to copy the waypoint.



A plus sign will be displayed under the mouse pointer while you're dragging it across the screen, which indicates that a file is attached.





An unavailable sign will be displayed on the screen if a file cannot receive the copied waypoint. Continue to drag the file until a plus sign is shown.

3. Drop: When the mouse pointer reaches the new location, the route or GPX file will be highlighted to indicate it can receive the waypoint. Release the left mouse button to copy the waypoint into the new location.

NOTE: The Drag & Drop operation creates a copy of the waypoint, route, or track. To delete an item from one file and move it into another file, use Cut and Paste.

Copy & Paste (share)

1. Right-click the waypoint you want to share, and then click Copy.
2. Move the mouse pointer to the File Pane location or active window where you want to move the waypoint. Right-click the location, and then click Paste. This will paste the waypoint into the location you choose.

NOTE: The Copy & Paste operation creates a copy of the waypoint, route, or track. To delete an item from one file and move it into another file, use Cut and Paste.

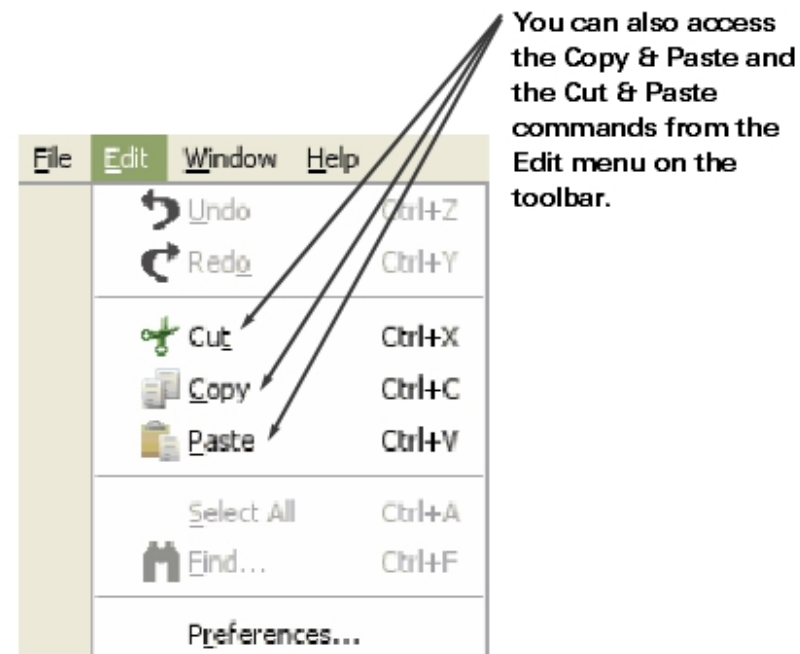
Cut & Paste (move)

1. Right-click the waypoint you want to move, and then click Cut.
2. Move the mouse pointer to the File Pane location or active window to where you want to move the waypoint. Right-click the location, and then click Paste. The waypoint, route, or track will be moved into the new file location you choose.

[Back to top](#)

Managing GPX Files

[Open Multiple Windows](#)



[Share GPX Files](#)

Related Topics

[Change Travel Order](#)

[Waypoints](#)

[Routes](#)

[Tracks](#)

© 2008 Humminbird®, Eufaula AL, USA. All rights reserved.



HUMMINBIRD®

Help Topics

About Google Earth™ Mapping Service Link

HumminbirdPC™ connects to Google Earth™ mapping service to bring your navigation data to the next level.

Create a new waypoint in HumminbirdPC™, set the coordinates, and assign an icon. Then, just click the Google Earth™ button, and you can check out the waypoint and the surrounding area in advance.

Review your tracks in Google Earth™ to decide which tracks you want to use on your next fishing trip.

Create a new route in HumminbirdPC™ and review it in Google Earth™. You can make changes to your route in HumminbirdPC™ before you even hit the water.

Using Google Earth™

[Install Google Earth™](#)

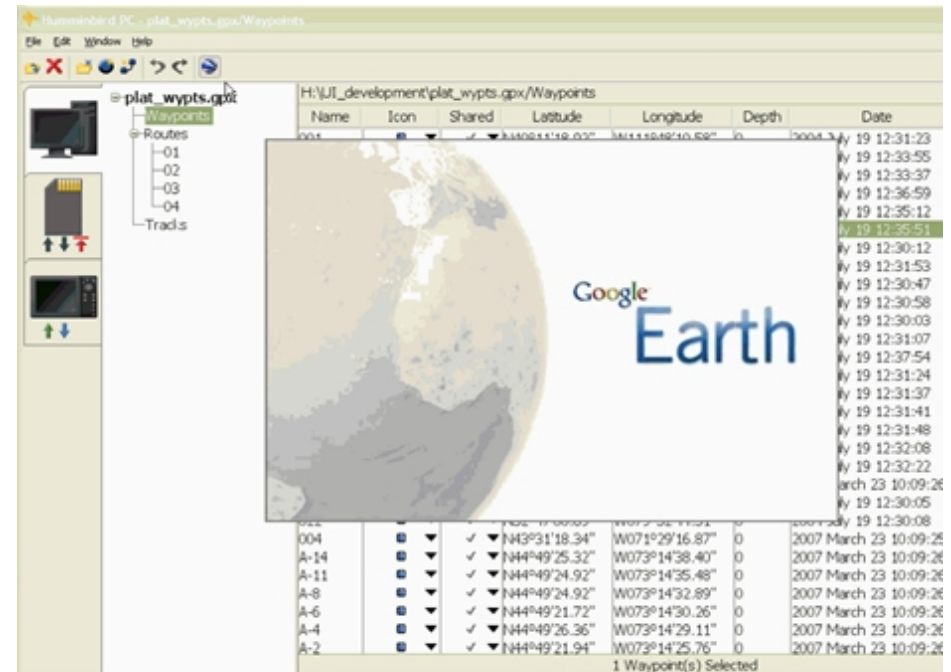
[View Waypoints, Routes, and Tracks](#)

Related Topics

[Waypoints](#)

[Routes](#)


[Tracks](#)





Help Topics

Install Google Earth™

The first time you click the  Google Earth™ button, HumminbirdPC™ will direct you to the Google Earth™ installation page. Simply follow the instructions.

NOTE: Your computer must be connected to the Internet.

Using Google Earth™

- [About Google Earth™](#)
- [View Navigation Data](#)

Related Topics

- [Waypoints](#)
- [Routes](#)
- [Tracks](#)
- [Customer Resource Center](#)

Google Earth™ button
click to link to
Google Earth™

Name	Icon	Shared	Latitude	Longitude
BIGSTISL		<input type="checkbox"/>	N45°55'46.19"	W089°31'
BIGSTROK		<input type="checkbox"/>	N45°56'22.68"	W089°31'
COLGROVE		<input type="checkbox"/>	N49°45'21.09"	W093°24'
DOG HUMP		<input type="checkbox"/>	N49°48'16.19"	W093°24'
WPT 069		<input type="checkbox"/>	N47°53'37.54"	W092°23'
WPT 071		<input type="checkbox"/>	N47°53'27.89"	W092°24'
WPT 073		<input type="checkbox"/>	N47°53'06.57"	W092°26'
WPT 075		<input type="checkbox"/>	N47°53'33.06"	W092°26'
WPT 120		<input checked="" type="checkbox"/>	N49°46'53.90"	W093°22'
WPT 145		<input type="checkbox"/>	N49°25'08.32"	W094°50'
WPT 146		<input type="checkbox"/>	N49°24'59.59"	W094°49'
WPT 126		<input type="checkbox"/>	N47°01'36.63"	W092°13'
WPT 134		<input type="checkbox"/>	N47°01'28.45"	W092°08'
WPT 149		<input type="checkbox"/>	N47°01'28.12"	W092°09'
WPT 144		<input checked="" type="checkbox"/>	N49°27'33.56"	W094°50'
WPT 123		<input checked="" type="checkbox"/>	N47°00'18.03"	W092°12'
WPT 122		<input checked="" type="checkbox"/>	N46°59'30.95"	W092°13'
WPT 143		<input checked="" type="checkbox"/>	N49°27'09.21"	W094°54'
WPT 137		<input checked="" type="checkbox"/>	N47°01'49.88"	W092°05'
WPT 140		<input checked="" type="checkbox"/>	N46°59'56.48"	W092°11'
WPT 121		<input checked="" type="checkbox"/>	N49°39'58.29"	W093°17'
WPT 120		<input checked="" type="checkbox"/>	N49°46'53.90"	W093°22'



HUMMINBIRD®

Help Topics


View Navigation Data in Google Earth™

It's easy to view your waypoints, routes, and tracks in Google Earth™. If Google Earth™ is not installed on your computer, you will be prompted to begin installation. See [Install Google Earth™](#) for more information.

To view WAYPOINTS in Google Earth™:

1. In any active waypoint or route window, click the waypoint you want to view so that the row is highlighted.

NOTE: To select more than one waypoint, click the selected rows while holding down the Ctrl key.


2. Click the  Google Earth™ button on the toolbar. Google Earth™ mapping service will open in a new window and show your waypoint on the screen.

NOTE: If you cannot see your waypoint icons in Google Earth™, expand the range on the time slider.

To view ROUTES in Google Earth™:

1. In the File Pane, click the route you want to view so that the route name is highlighted.

NOTE: To select more than one route, click the selected routes while holding down the Ctrl key.

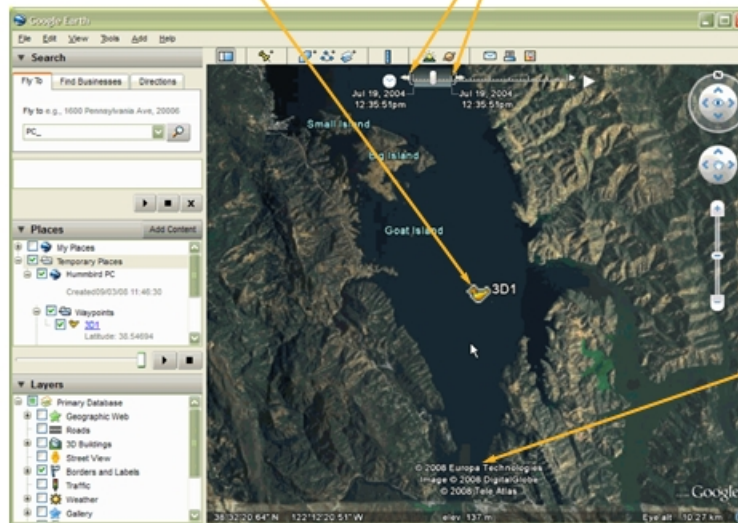
2. Click the  Google Earth™ button on the toolbar. Google Earth™ will open automatically and run through the route you've chosen in the waypoint order assigned. At the end of the route, Google Earth™ will zoom out to show an aerial view of your route.

To view TRACKS in Google Earth™:

1. In any active track window, click the track you want to view

Viewing a Waypoint in Google Earth™

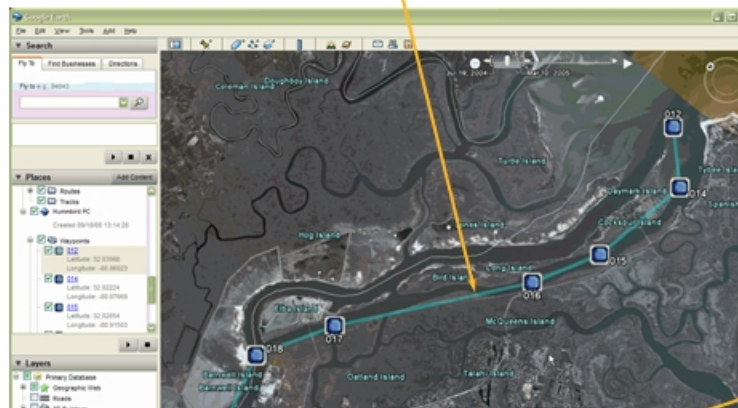
If you cannot see your waypoint icons in Google Earth™, click and drag the range parameters on the time slider.



©2008 Europa Technologies
Image © 2008 DigitalGlobe
© 2008 Tele Atlas


©2008 Google™

Viewing a Route in Google Earth™



©2008 Europa Technologies
Image © 2008 DigitalGlobe

so that the row is highlighted.

2. Click the  Google Earth™ button on the toolbar. Google Earth™ will open automatically and show your track on the screen.

NOTE: To view the waypoints associated with a track in Google Earth™, click the waypoint box. Activating this feature may cause longer loading time.

Using Google Earth™

- [Install Google Earth™](#)
- [About Google Earth™](#)

Related Topics

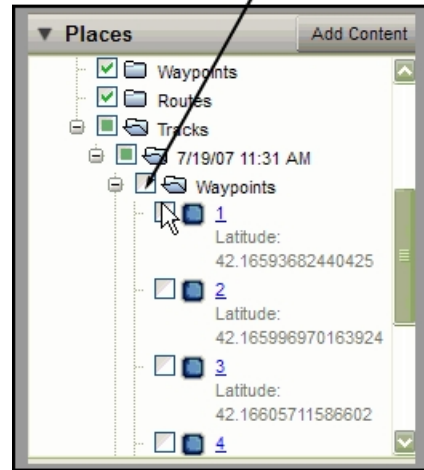
- [Waypoints](#)
- [Routes](#)
- [Tracks](#)

© 2008 Humminbird®, Eufaula AL, USA. All rights reserved.



Viewing a Track in Google Earth™

To view the waypoints associated with a track in Google Earth™, click to check the waypoint box.





Help Topics

Preferences

Select Edit>Preferences from the Toolbar Menu to access the Preferences dialog box.

The Preferences dialog box allows you to set where your GPX files are stored on your computer and how you want your HumminbirdPC™ to operate in the following categories:

Allow HumminbirdPC to look for unit updates: Keep this box checked to allow HumminbirdPC™ to connect to the Internet and search for software upgrades.

Close all files when exiting: If you prefer to choose which GPX files to open each time you open HumminbirdPC™, then click this box. If you want to see the GPX Files that were open during your last HumminbirdPC™ session, do not check this box.

Font Size: Choose the font size from the drop-down box to view files in HumminbirdPC™.

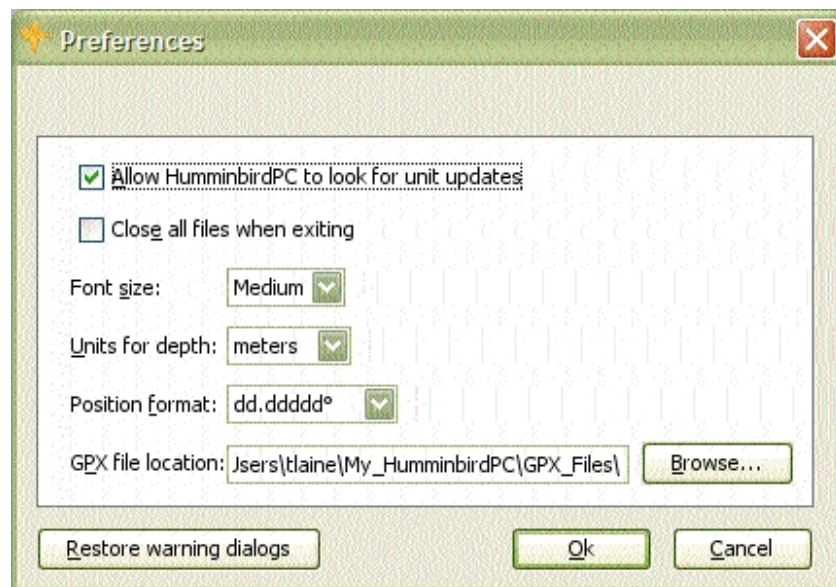
Units for Depth: Choose the units of measurement from the drop-down box for the depth data in your files.

Position Format: Choose the latitude and longitude format from the drop-down box for the position data in your files.

GPX File Location: HumminbirdPC™ automatically saves your GPX files to the following directory on your PC:

[\[User Directory\]\My_HumminbirdPC\GPX_Files\](#)

If you want to change this location, click the Browse button.



Related Topics

[GPX Files](#)

[Update Software](#)

© 2008 Humminbird®, Eufaula AL, USA. All rights reserved.



Help Topics

Toolbar Buttons

Hover the mouse pointer over a button, and the function will be displayed. The functions are also described below.

Toolbar Menus:

Click on File, Edit, Window, or Help to see the menu options.

Buttons:

Opens a file from your computer

Deletes the selected item

Creates a new GPX file

Creates a new waypoint

Creates a new route

Undo: reverses the last action

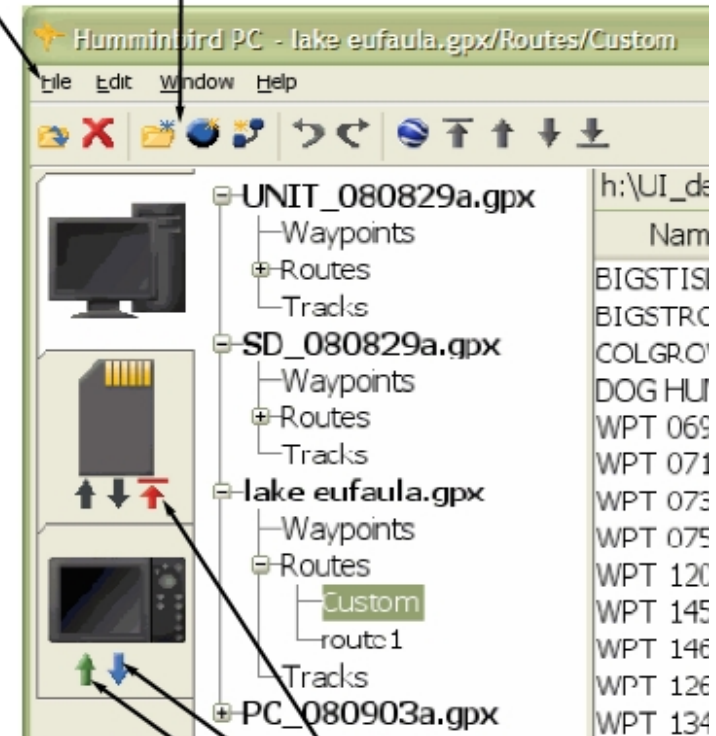
Redo: Repeats the last action

Links to Google Earth™ mapping service


Moves the selected waypoint to first in the travel order

Toolbar Buttons
Hover the mouse pointer over each button, and the function will display.

Toolbar Menus
File
Edit
Window
Help





Eject
Download
Upload


 Moves the selected waypoint up in the travel order

 Moves the selected waypoint down in the travel order

 Moves the selected waypoint to last in the travel order

 Upload - Exports data from HumminbirdPC™ to the Humminbird® unit or MMC/SD card

 Download - Imports data from the Humminbird® unit or MMC/SD card to your PC

 Eject - Closes the connection to the attached card reader, which allows the card to be safely ejected.

Related Topics

[Mouse Functions](#)

[Keyboard Shortcuts](#)

[Getting Started](#)

[What's on the Screen](#)

© 2008 Humminbird®, Eufaula AL, USA. All rights reserved.



Keyboard Shortcuts

Use the following keyboard shortcuts to make your time with HumminbirdPC™ even more efficient.

- Alt + F File Menu open
- Ctrl + O GPX File open
 - Ctrl + W GPX File close
 - Ctrl + Shift + S Save As
 - Ctrl + Q Quit Program

- Alt + E Edit Menu open
- Ctrl + C Copy
 - Ctrl + V Paste
 - Ctrl + X Cut
 - Ctrl + A Select All
 - Ctrl + Z Undo
 - Ctrl + Y Redo
 - Ctrl + F Find

- Alt + H Help Menu open
- F1 Open Help Guide

Related Topics

[Mouse Functions](#)

[Toolbar Buttons](#)

[Getting Started](#)

© 2008 Humminbird®, Eufaula AL, USA. All rights reserved.



HUMMINBIRD®

Help Topics

Mouse Functions

Use the mouse functions below to access the many menu options in HumminbirdPC™.

To use mouse functions:

Click: Press and release the left mouse button once. This function is usually used to highlight or select menu and screen items.

Double-click: Press and release the left mouse button quickly twice. This function is often used to open a menu option.

Drag & Drop Function: Click to highlight the file you want to copy. Then, press and hold the left mouse button down as you drag the highlighted file across the screen. Releasing the left mouse button copies the file into a new location.



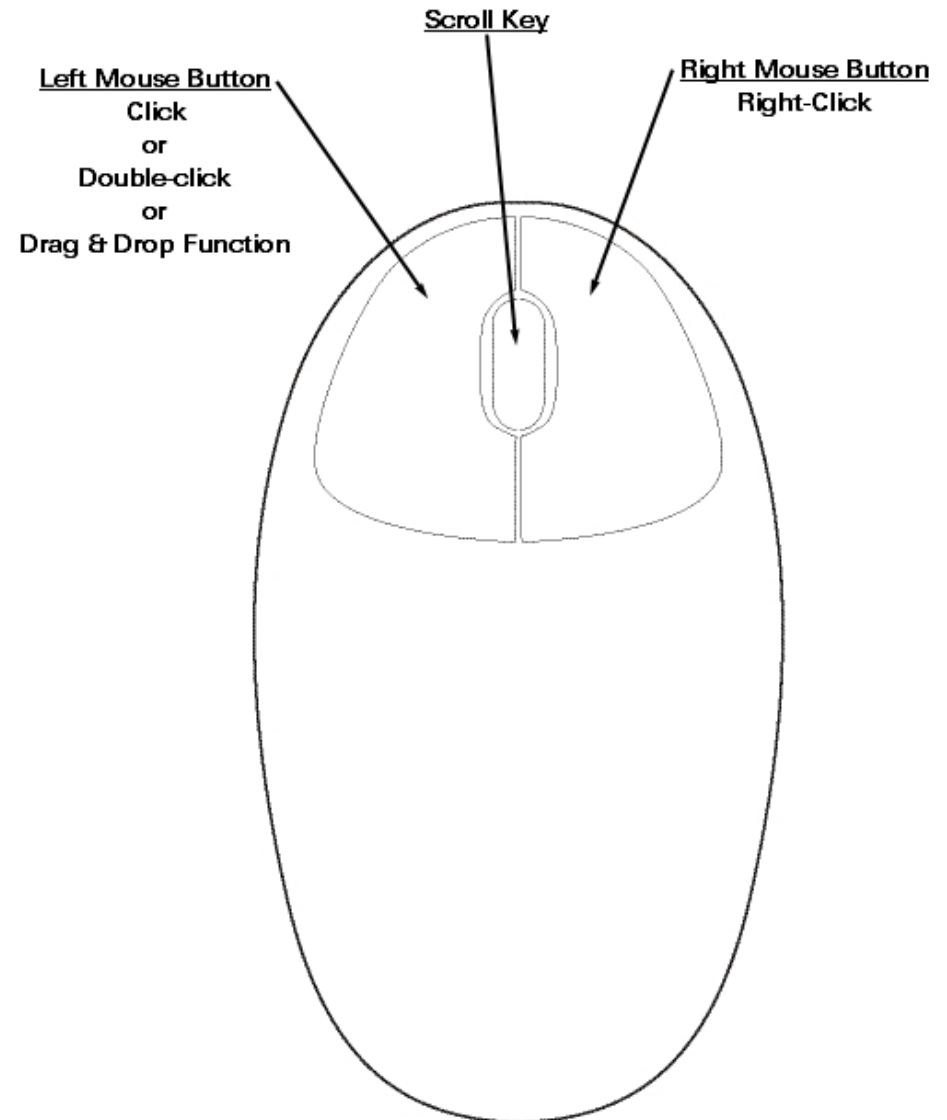
A plus sign will be displayed under the mouse pointer while you're dragging it across the screen, which indicates that data is attached.



An unavailable sign will be displayed on the screen if a file or tab cannot receive the data. Continue to drag the data until a plus sign is shown.

Hover: Move the mouse pointer over a button on the screen, and the button's function will display.

Right-click: Press and release the right mouse button. After an item has been highlighted (using the click function), the



right-click function is often used to access a related shortcut menu.

Scroll: Click a window scroll bar on the screen, and move the mouse scroll key up or down to view more of the window.

Related Topics

[Keyboard Shortcuts](#)

[Toolbar Buttons](#)

[Getting Started](#)

© 2008 Humminbird®, Eufaula AL, USA. All rights reserved.



HUMMINBIRD®

Help Topics

Navigation Data

Term used to describe waypoints, routes, and tracks.

Related Topics

[Waypoints](#)

[Routes](#)

[Tracks](#)

[GPX Files](#)

© 2008 Humminbird®, Eufaula AL, USA. All rights reserved.



HUMMINBIRD®

Help Topics

FAQ/Troubleshooting

Review the following section to find answers to your HumminbirdPC™ questions. For additional assistance, contact our [Customer Resource Center](#).

Q: I've attached a Humminbird® unit to my computer, but I don't see the [Unit tab](#) in HumminbirdPC™.

A: Disconnect and then reconnect the unit. Then, power on the unit.

Q: My SD/MMC card has a *.hwr file on it, not a *.gpx. How do I get my navigation data to my PC?

A: When you first insert an SD/MMC card, your computer might display an "Open to Explore files" dialog box. Close the dialog box. Then, open the PC Tab in HumminbirdPC™ to download from the SD/MMC card. HumminbirdPC™ converts the *.hwr file to *.gpx for you. See [Download](#) for more information.

Q: I don't see the Upload or Download commands in the Unit Tab or MMC/SD Tab.

A: Once the Unit Tab or MMC/SD Tab is active, click on the PC Tab to open it. The [Upload](#) and [Download](#) command buttons will appear on the device tabs when the PC Tab is open.

Q: Can I move files between devices without downloading them to HumminbirdPC™ first?

A: Yes, see [Transfer Data Between Devices](#)

Q: I cannot see all of my GPX Files in HumminbirdPC™.

A: If you have closed GPX files in HumminbirdPC™, they are saved to your computer, but they need to be opened in HumminbirdPC™. See [Open GPX Files](#).

Q: How can I change the location where my GPX files are stored on my computer?

Related Topics

[Getting Started](#)

[Mouse Functions](#)

[Toolbar Buttons](#)

[Keyboard Shortcuts](#)

[Contact Customer Resource Center](#)

A: See [Preferences](#).

Q: I cannot see my waypoints in Google Earth™.

A: To view a waypoint icon in Google Earth™, expand the range on the time slider. To view the waypoints associated with a track in Google Earth™, click the waypoint box. Activating this feature may cause longer loading time. See [View Navigation Data in Google Earth™](#) for more information.

Q: When I try to make changes to one waypoint, other waypoints are changed in the same file.

A: If the waypoint is a copy, the edits will change all of the copies within the GPX file. It is better to [create a new waypoint](#).

Q: I cannot see my snapshots or recordings in HumminbirdPC™.

A: Snapshots and recordings cannot be viewed in HumminbirdPC™.

© 2008 Humminbird®, Eufaula AL, USA. All rights reserved.



HUMMINBIRD®

Help Topics

Contact Humminbird®

Contact the Humminbird® Customer Resource Center in any of the following ways:

Telephone: 1-800-633-1468

Monday - Friday 8:00 a.m. to 4:30 p.m Central Standard time.

E-mail:

cservice@johnsonoutdoors.com

Response time is typically within three business days of your request.

Direct Shipping

Humminbird
Service Department
678 Humminbird Lane
Eufaula, AL 36027

Related Topics

[Troubleshooting](#)

[Getting Started](#)

[Mouse Functions](#)

[Toolbar Buttons](#)

[Keyboard Shortcuts](#)




HUMMINBIRD®

Help Topics

Exit HumminbirdPC™

When HumminbirdPC™ is closed, files that are active in the File Pane are closed and saved automatically. The next time HumminbirdPC™ is opened, the same files will display.

To exit HumminbirdPC™:

1a. Click the  Close button in the top right corner of the HumminbirdPC™ window, *OR*

1b. On the File menu, click Exit.

2. Your GPX file changes will be saved. Any GPX files that are open when you exit HumminbirdPC™ will be displayed when it is reopened.

Managing HumminbirdPC™

[Getting Started](#)

[Open/Close GPX Files](#)

[Upload](#)

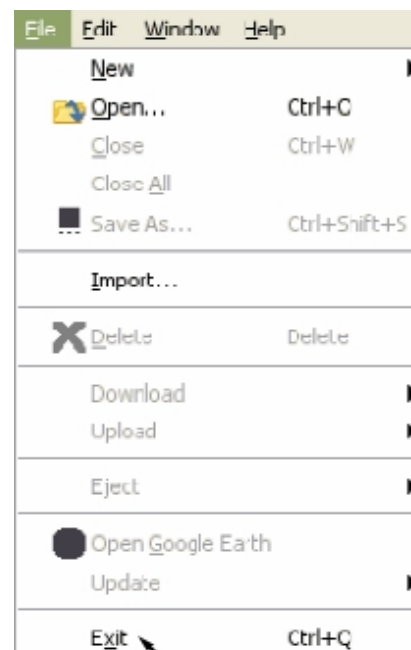
[Download](#)

Related Topics

[PC Tab](#)

[Unit Tab](#)

[MMC/SD Tab](#)



Click File>Exit on the toolbar