

Thank You!

Thank you for choosing Humminbird®, America's #1 name in fishfinders. Humminbird® has built its reputation by designing and manufacturing top-quality, thoroughly reliable marine equipment. Your Humminbird® is designed for trouble-free use in even the harshest marine environment. In the unlikely event that your Humminbird® does require repairs, we offer an exclusive Service Policy - free of charge during the first year after purchase, and available at a reasonable rate after the one-year period. For complete details, see the separate warranty card included with your accessory. We encourage you to read this operations manual carefully in order to get full benefit from all the features and applications of your Humminbird® product.

Contact our Customer Resource Center at either **1-800-633-1468** or visit our website at **www.humminbird.com**.

WARNING! *This device should not be used as a navigational aid to prevent collision, grounding, boat damage, or personal injury. When the boat is moving, water depth may change too quickly to allow time for you to react. Always operate the boat at very slow speeds if you suspect shallow water or submerged objects.*

CAUTION: *Platinum™ Cartography is designed to supplement the use of authorized government charts, not be used instead of them. You should use official government charts for the most up to date information to ensure safe navigation.*

Platinum™ Cartography is a registered trademark of Navionics®.

800 Series™, 900 Series™, 1100 Series™, Cannon®, CannonLink™, Humminbird®, HumminbirdPC™, InterLink™, X-Press™ Menu, Structure ID®, SmartCast®, UniMap™ and WeatherSense® are trademarked by or registered trademarks of Humminbird®.

© 2010 Humminbird®, Eufaula AL, USA. All rights reserved.

Table of Contents

How Platinum™ Cartography Works	1	Navigation X-Press™ Menu Platinum™ Cartography Addition	16
Multi-Media Card (MMC)/SD Slot	2	<i>(Navigation Views only)</i>	
Software Updates	2	Overlay Transparency <i>(only in Navigation Views when Chart Aerial Overlay is visible)</i>	16
Additional Platinum™ Cartography Key Functions	3	Exaggeration <i>(only in Navigation Views, 1100 Series™ models only)</i>	16
VIEW Key	3	Chart Menu Tab Platinum™ Cartography Additions	17
MENU Key	3	Chart Detail Level	17
4-WAY Cursor Control Key	4	Map Borders.....	18
EXIT Key	4	Platinum™ Menu Tab <i>(only with Platinum™ Cartography MMC/SD card)</i>	19
INFO Key	5	Chart Aerial Overlay	19
GOTO Key	5	3D Aerial Overlay	19
ZOOM [+/-] Keys	6	Platinum 3D	19
Views	6	Troubleshooting	20
Chart/Pilot Book Combo View	7	Fishing System Doesn't Power Up	20
How to Use the Pilot Book	8	Fishing System Defaults to Simulator with a Transducer Attached	20
Moving Through the Pilot Book	8	Display Problems	21
Bird's Eye View.....	11	Finding the Cause of Noise	22
Chart View	13	Humminbird® Accessories	23
Nearest Port and Chart Information.....	14	Glossary	24
How Platinum™ Cartography Affects The Menu System	15	Contact Humminbird®	30

How Platinum™ Cartography Works

Platinum™ Cartography is only available in the 858c, 898c, 955c, 957c, 958c, 967c, 997c, 998c and 1100 Series™ models if you have an optional-purchase Navionics® Platinum™ Cartography MMC/SD card installed. Platinum™ Cartography provides:

- a photographic overlay on certain views,
- additional icons for ports and other landmarks,
- pilot books that provide commentary from captains for certain ports,
- panoramic photos of some ports (such as marinas), and
- 3D Platinum™ Cartography.

3D Platinum™ Cartography displays a 3 dimensional rendered view of both the water where you are navigating and the ports and land masses in the area surrounding the boat's position. Land is shown in varying shades of yellow, with the color changes indicating the relative height above sea level. Water and submerged objects are shown in varying shades of blue, with the color changes indicating the relative depth.

NOTE: If you cannot see any Platinum™ information, the MMC/SD card installed in your control head may not have any Platinum™ data for the area you are viewing. In this case, zoom out far enough to see the dotted gridlines on the Bird's Eye View, which indicate areas where 3D data is available. Then, using the 4-WAY Cursor Control key, move into the center of the dotted gridlines, and press the Zoom + key to zoom in again. See **Bird's Eye View** for more information.

NOTE: It may take a moment for the Platinum™ information to load.

The user interface will change to show the following Platinum™ Cartography features when you install a Navionics® Platinum™ Cartography MMC/SD card:

- A new Platinum™ main menu tab will appear that contains the Chart Aerial Overlay, 3D Aerial Overlay, and Platinum 3D menu choices;
- The Chart/Pilot Book View is added to the Views Menu, and to the views rotation after the Chart View (The Chart/Pilot Book View is hidden by default);
- The Bird's Eye View changes to show charts loaded with 3D representations for a new 3D Bird's Eye View that has the following added functionality:
 - The zoom level will affect how much space is taken up in the view and how much white space is shown.
 - Platinum™ Nav aids (navigational aids) are displayed as long as the Chart Detail Level is set to Navigation or higher.
 - An aerial photo overlay is shown on the 3D representation of the Bird's Eye View.

NOTE: You must be zoomed in enough, but not too close, to be able to see the 3D overlay.

- Chart views will display Navionics® Platinum™ items, depending on the Chart Detail level set; when All is selected, all of the Platinum™ icons that are available on a particular part of the map will be displayed.
- When Chart Aerial Overlay is set to Visible on the Platinum™ Main Menu, you'll see a photo on top of your chart, and the Overlay Transparency X-Press™ Menu that allows you to adjust the transparency via a slider will be added to the Chart views.

- INFO key functionality:
- Port Info has new functionality. The following three selections come up as a submenu:

Port Information

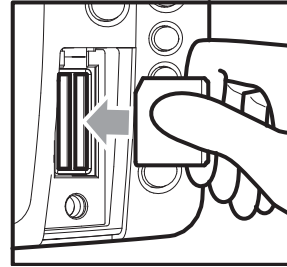
Pilot Book (see *How to Use the Pilot Book* for more information)

Panoramic Photo: (see *Nearest Port and Chart Information* for more information)

NOTE: Each selection is displayed only if it is actually available for the port, and if only one selection is available, it is displayed without any submenu selection.

NOTE: Choosing any of these options cursors to the item of interest.

Multi-Media Card (MMC)/SD Slot



Inserting an MMC/SD
into the Card Slot

Your Humminbird® Fishing System also has a multi-media card (MMC)/SD slot that is used to insert optional-purchase cards containing additional detailed maps. If you insert an MMC/SD that contains a more detailed chart for a particular location, your Humminbird® Fishing System will retrieve that chart and display it automatically. Use the illustration to locate the position of the MMC/SD slot cover, remove the MMC/SD slot cover, then insert the MMC/SD into the slot. The label on the MMC/SD should face toward the left side of the unit. Press down on the card until it clicks into place and replace the slot cover. Then, replace and tighten snugly - do NOT overtighten, as this will not improve water resistance, and may damage the cover.

Software Updates

Use the MMC/SD slot to update the software version of your control head. To update the software in your control head, plug in the appropriate MMC/SD card that contains a software update file; the unit will recognize it, will tell you what software version your control head is currently running, and will ask you if you want to update the software in the unit to match that on the MMC/SD card. You can obtain software updates from the www.humminbird.com website.

Additional Platinum™ Cartography Key Functions

Your user interface consists of a set of easy-to-use keys that work with various on-screen views and menus to give you flexibility and control over your fishing experience. Your control head operations manual contains full descriptions of the functions of these keys, but the following keys have additional Platinum™ Cartography functionality when a Platinum™ Cartography MMC/SD card is installed:

- VIEW key
- MENU key
- 4-WAY Cursor Control key
- EXIT key
- INFO key
- GOTO key
- ZOOM [+/-] keys.



VIEW Key

The VIEW key is used to cycle through all available views. Press the VIEW key to advance to the next view. Repeatedly pressing VIEW cycles through all views available. Views can be hidden to optimize the system to your fishing requirements.

- When you have the Platinum™ MMD/SD card installed, the view rotation will include the Chart/Pilot Book View.

NOTE: Use the Views tab under the Main Menu to change each view to Hidden or Visible.



MENU Key

The MENU key is used to access the menu system.

X-Press™ Menu - Press the MENU key once for the X-Press™ Menu. The X-Press™ Menu displays the new Overlay Transparency Platinum™ X-Press™ Menu choice in any of the Chart navigation views when Chart Aerial Overlay is set to Visible. See *Navigation X-Press™ Platinum™ Cartography Additions: Overlay Transparency (only in Navigation Views when Chart Aerial Overlay is visible)* for more information.

Main Menu - Press the MENU key twice for the tabbed Main Menu System. The Main Menu System is organized under tabbed headings to help you find a specific menu item quickly: Alarms, Sonar, Navigation, Chart, Setup, Views, Accessories, and Platinum™ tabs are part of your tabbed Main Menu System.



4-WAY Cursor Control Key

The 4-WAY Cursor Control key has multiple Platinum™ Cartography functions, depending on the situation:



Pilot Book Selection - Use the 4-WAY Cursor Control keys to select a port icon (shown as a sailboat within a white square), then press the INFO key to display the Port Info menu. When a pilot book is available, you can use the 4-WAY Cursor Control keys to select a pilot book, then use the 4-WAY Cursor Control keys to navigate through the pilot book, in combination with the GOTO key. See *How to Use the Pilot Book* for more information.

NOTE: You can also view the pilot book by pressing the VIEW key until the Chart/Pilot Book View appears.

Change 3D Perspective - Use any arrow key to change the perspective in the 3D Bird's Eye View. Subsequent presses of arrow keys rotate and tilt the 3D representation.



EXIT Key

The EXIT key has one function specific to Platinum™ Cartography:

- If you are viewing a panoramic photo in a Bird's Eye or Chart view, pressing EXIT will exit the panoramic photo and return you to the normal view with the cursor active.



INFO Key

Press the INFO key while in any navigation view to display information about objects that are nearest to an active cursor.

NOTE: You can use the INFO key to obtain extra information about specific Navionics® icons.

NOTE: Your control head will have one of the keys shown here. Both keys function in the same way.

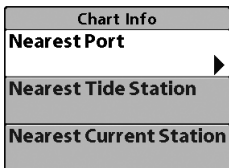
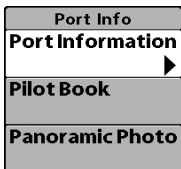


Chart Info menu:

If the cursor is not active, pressing the INFO key will highlight the Chart Info menu. Use the 4-WAY Cursor Control key to highlight Nearest Port, Nearest Tide Station or Nearest Current Station, then use the RIGHT Cursor key to display the requested information.



Port Info menu:

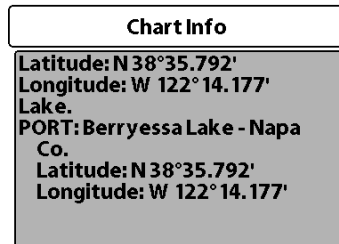
If the cursor is active, pressing the INFO key will display the Port Info menu. From the Chart Info menu, if you choose Nearest Port using the 4-WAY Cursor Control keys, the Port Info menu will also be displayed. Use the 4-WAY Cursor Control key to highlight Port Information, Pilot Book or Panoramic

Photo (some of these may not be present, depending on what is actually available for the map at this location), then use the RIGHT Cursor key to display the requested information.

NOTE: Not all menu choices will be displayed, as they are dependent on what information is available from your MMC/SD card at that point in the map.

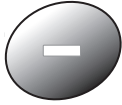
NOTE: The built-in UniMap™ does not contain Port, Tide or Current information. This information is only available from optional purchase MMC/SD cards.

NOTE: If a Chart Information text box appears instead of one of the Info menus, this means that there is no additional pilot book or panoramic photo information available near your cursor's location.



GOTO Key

The GOTO key has additional Platinum™ Cartography functionality in the pilot book, where it is used to move from screen to screen in the pilot book hierarchy. See the *Chart/Pilot Book View* section for more information.

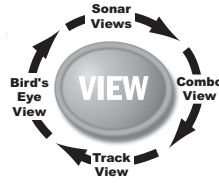


ZOOM (+/-) Keys

Press the - or + ZOOM keys while in any of the Navigation Views or the Sonar Zoom View to change the scale of the view to appear closer or farther away.



NOTE: *Platinum™ information, such as a 3D or photographic overlay, will not be displayed if you are zoomed out too far, or zoomed in too far. Use the ZOOM keys to adjust your perspective until you can see the Platinum™ information.*



Views

Chart/Pilot Book Combo View will be added to the View Rotation when a Platinum™ Cartography Multi-Media Card (MMC)/SD Card is installed in the Fishing System. In addition, the following views will have additional Platinum™ Cartography features added to them:

New Platinum™ Cartography View:

- Chart/Pilot Book Combo View

Navigation Views Affected by Platinum™ Cartography:

- Bird's Eye View
- Chart Views

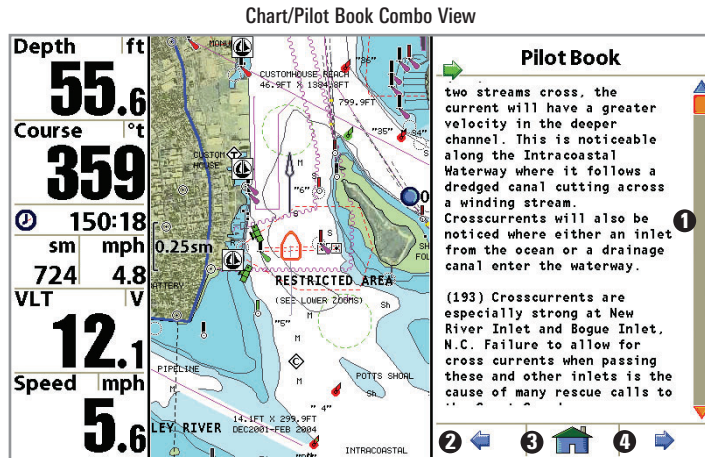
Chart/Pilot Book Combo View

The pilot book is a collection of captain's log entries, displayed in book form, that is associated with certain ports. Chart/Pilot Book Combo View shows both the Chart and Pilot Book views in a combination split screen. You can perform any of the functions for either of these views, but only when the view you want to control is selected as the active side.

NOTE: Press the MENU key once to access the Navigation X-Press™ Menu, and using the 4-WAY Cursor Control Key, change the Active Side of the Combo View to right or left.

NOTE: The Chart/Pilot Book Combo View defaults to Hidden; you must make it Visible using the Chart/Pilot Book View menu on the Views Main Menu tab. However, if you select Pilot Book from the Port Info menu, you will be taken to the Chart/Pilot Book Combo View automatically, regardless of how the view is set to display. See **View Main Menu** and **Nearest Port and Chart Information** for more information.

NOTE: See **Chart View** for more information about the Chart side of this view.



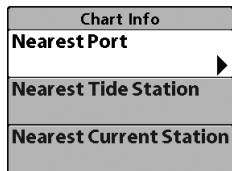
- 1 Use the UP and DOWN 4-WAY Cursor Control Keys to scroll up and down in the display
- 2 Highlighting the left arrow icon and pressing the GOTO Key takes you to the previous page.
- 3 Highlighting the Home icon and then pressing the GOTO Key takes you back a level - this icon is inactive if you are in the Pilot Book Index.
- 4 Highlighting the right arrow icon and pressing the GOTO Key takes you to the next page.

When you select Pilot Book from the Nearest Port submenu, or from the selected port if your cursor is active, the pilot book will open to the selected port on the Chart/Pilot Book Combo View. If you then change to a different view on the view rotation (using the VIEW key), then re-display the Chart/Pilot Book Combo View, the pilot book will remain open to the last page displayed until you power down the unit. If you have not yet selected a port when you go to the Chart/Pilot Book Combo View in the view rotation, the pilot book will open to the pilot book index. See **Moving Through the Pilot Book** for more information.

How to Use the Pilot Book

There are three ways to access the pilot book:

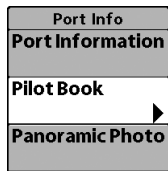
Chart Info Menu



The **first** way is to press the INFO key with the cursor inactive anywhere on the Bird's Eye or Chart View in order to display the Chart Info menu, then select Nearest Port to view the Port Info Submenu and choose Pilot Book.

NOTE: The Chart Info menu is available when the cursor is inactive or in Bird's Eye View.

Port Info Sub-menu



The **second** way to access the pilot book is to use the 4-WAY Cursor Control keys to move directly over the desired port (which will have a port icon indicating port information) and press the INFO key to view the Port submenu, then choose Pilot Book.

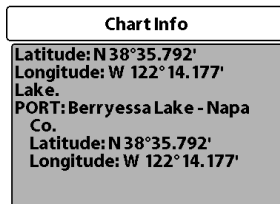


NOTE: The Port Info Submenu is available when the cursor is active and over a port icon on a chart view.

When you select Pilot Book from either of these submenus, the view changes to the Chart/Pilot Book Combo View. If this view is hidden in the view rotation, it will automatically be made visible when you select Pilot Book from either of the submenus, and will remain visible until you remove the Platinum™ Cartography MMC/SD card or hide the Chart/Pilot Book Combo View using the View main menu tab (see your Fishing System Operations Manual for more information).

The **third** way is to make sure that Chart/Pilot Book View is turned to Visible using the View Main Menu, then rotate to it using the VIEW key.

NOTE: If the Chart Information text box appears, a pilot book might not be available. Check your cursor position first. Unless you are in the Chart/Pilot Book Combo View, you must have your cursor positioned inside one of the Platinum™ map borders, and directly over a port that has a pilot book associated with it, to view a pilot book.



Moving Through the Pilot Book

Use the UP and DOWN arrows on the 4-WAY Cursor Control keys to scroll up and down in the pilot book index. The scroll bar will indicate your position.

Use the LEFT or RIGHT arrows on the 4-WAY Cursor Control keys to move the highlight to different items. To activate a highlighted selection, press the GOTO key.

As you scroll up or down, the first item to appear on the new page of the pilot book will be automatically highlighted.

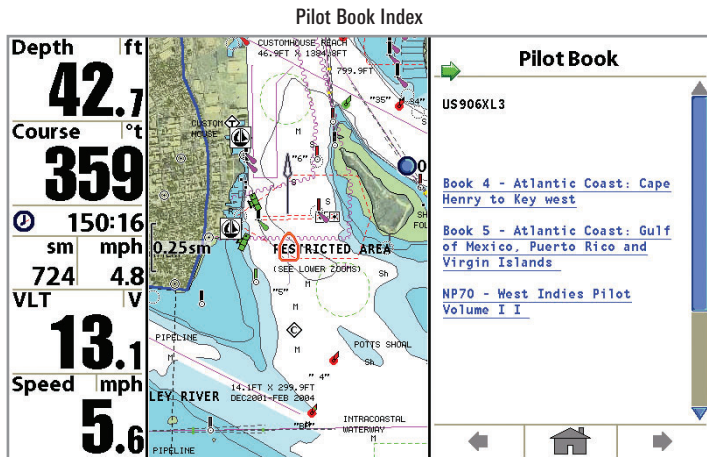
Highlight the previous or next arrows at the bottom of the screen and press the GOTO key to move to another page in the pilot book.

When you highlight the Home icon and press the GOTO key, the page that is the next level up in the hierarchy will be displayed (this may be the Index page).

If you try to move past the available choices, an error beep will sound.

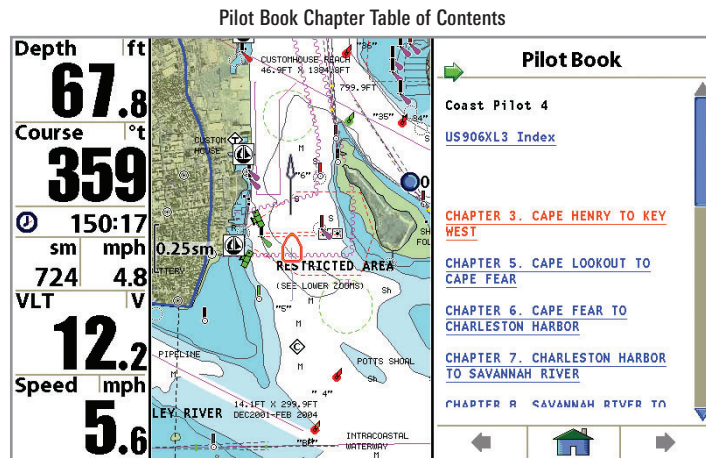
The pilot book is divided into the following categories:

Index: Displays the various pilot books available for this map.



1. When you are viewing a pilot book, and are at the top level (the index), you can scroll through the index using the UP and DOWN 4-WAY Cursor Control keys.
2. Use the LEFT or RIGHT 4-WAY Cursor keys to highlight items in the list of books available, then press the GOTO key to move into the Table of Contents for the selected pilot book.

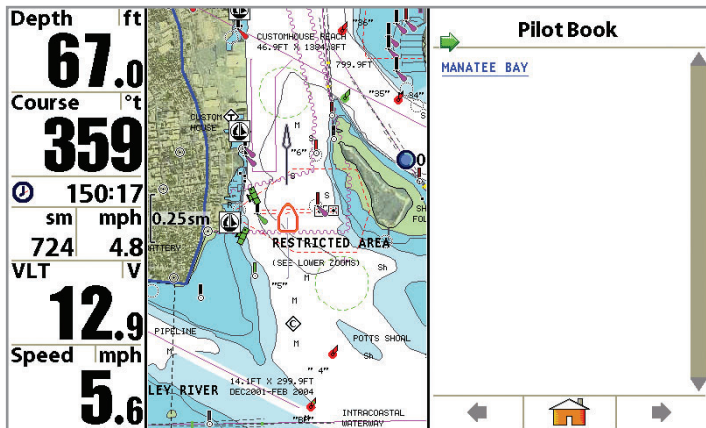
Chapter Table of Contents: Displays the chapters available in the selected pilot book.



1. Use the 4-WAY Cursor Control keys to move through this Table of Contents and to select a particular chapter for viewing.
2. If you continue to press the LEFT or RIGHT 4-WAY Cursor Control keys, and highlight the Home icon at the bottom of the screen, you may press the GOTO key to move back to the pilot book index.

Heading Table of Contents: Displays the headings available in the selected chapter.

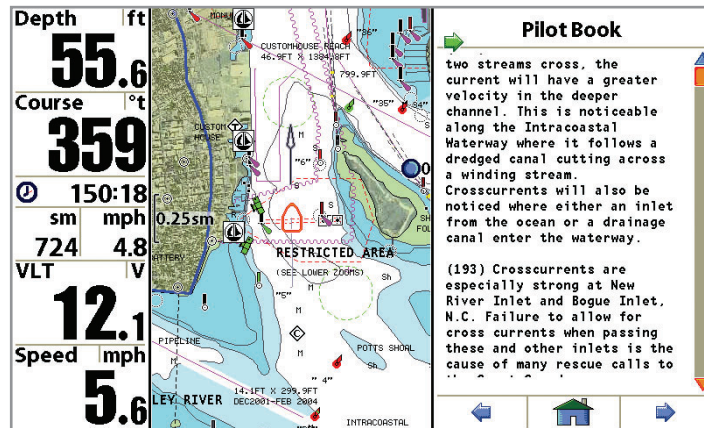
Pilot Book Heading Table of Contents



1. Use the 4-WAY Cursor Control keys to move through this Table of Contents and to select a particular heading for viewing.
2. If you continue to press the LEFT or RIGHT 4-WAY Cursor Control keys, and highlight the Home icon at the bottom of the screen, you may press the GOTO key to move back a level to the Chapter Table of Contents.

Page View: Displays the actual pages of the selected heading in the chapter of the pilot book.

Pilot Book Page View



1. Use the UP and DOWN 4-WAY Cursor Control keys to scroll up and down within the first page, or use the LEFT or RIGHT 4-WAY Cursor Control keys to highlight the previous or next arrows at the bottom of the page, then press the GOTO key to advance to another page.
2. If you continue to press the LEFT or RIGHT 4-WAY Cursor Control keys, and highlight the Home icon at the bottom of the screen, you may press the GOTO key to move back to the Heading Table of Contents.

Bird's Eye View

Bird's Eye View - This view shows a 3D, perspective view of the track from a point above and behind the boat (the eye point). As the boat turns, the eye point moves to follow the boat.

When you press the 4-WAY Cursor key in the Bird's Eye View, the position of the eye point will shift. This allows you to move and turn the eye point so that you can look off to the sides, or even behind the boat. Pressing the RIGHT or LEFT arrow keys on the 4-WAY Cursor key turns the eye point right or left, while pressing the UP arrow key moves the eye point forward, and pressing the DOWN arrow key moves the eye point backward.

Pressing the EXIT key moves the eye point back to its original position behind and above the boat.

You can use the INFO key to get information on the objects near the boat. See **Nearest Port and Chart Information** for more information.

3D View: Once Platinum™ Cartography is added to your Fishing System, the Bird's Eye View changes to a 3D View. When you are zoomed out, it will appear as if you are in normal Bird's Eye View. Press the Zoom + key to see the view in 3D.

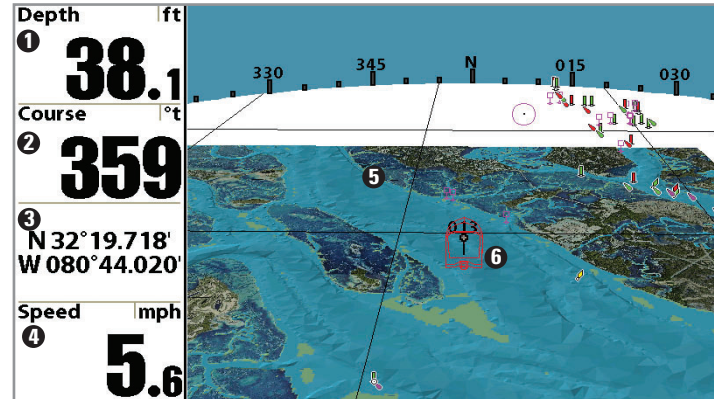
Photographic Overlay: Once Platinum™ Cartography is added to your Fishing System, and 3D Aerial Overlay is set to Visible using the Platinum™ Main Menu, the Bird's Eye View changes to show a photographic overlay. When you are zoomed out, it will appear as if you are in normal Bird's Eye View. Press the Zoom + key to zoom in and view the photographic data (when photographic data is available in the map).

NOTE: Platinum™ information, such as a 3D overlay or photographic data, will not be displayed if you are zoomed out too far, or zoomed in too far. Use the ZOOM keys to adjust your perspective until you can see the Platinum™ information.

See **Platinum™ Menu Tab: 3D Aerial Overlay** for more information.

Platinum™ gridlines will only be displayed appropriately on the Bird's Eye View if Map Borders is set to MMC/SD Only or All Visible. See **Chart Menu Tab; Platinum™ Cartography Additions: Map Borders** for more information.

Bird's Eye View, Showing 3D and Photographic Data and Nav aids

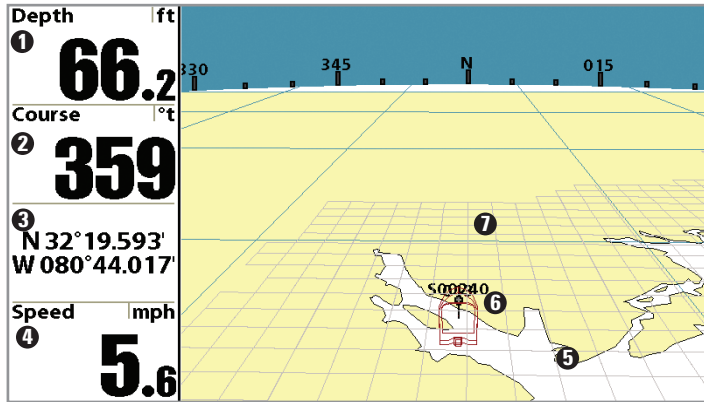


- 1** Depth
- 2** Course: Direction that boat is traveling relative to North Reference
- 3** Latitude and Longitude Position of Boat

- 4** Speed of Boat
- 5** Land Contours
- 6** Boat Icon

NOTE: The entire view may not be completely filled up with information, depending on the zoom level.

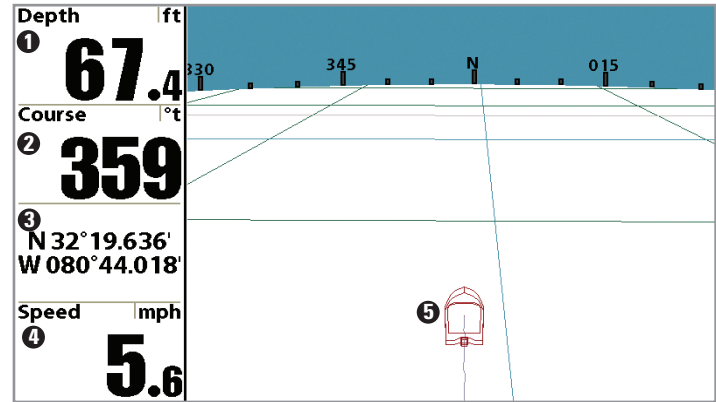
Bird's Eye View Zoomed Out Too Far - No 3D or Photographic Data Visible



- ① Depth
- ② Course: Direction that boat is traveling relative to North Reference
- ③ Latitude and Longitude Position of Boat

- ④ Speed of Boat
- ⑤ Land Contours
- ⑥ Boat Icon
- ⑦ 3D Data Gridlines

Bird's Eye View Zoomed In Too Far - No 3D or Photographic Data Visible



- ① Depth
- ② Course: Direction that boat is traveling relative to North Reference
- ③ Latitude and Longitude Position of Boat

- ④ Speed of Boat
- ⑤ Boat Icon

Chart View

Chart View shows cartography from the built-in UniMap™ or an optional MMC/SD map for the area surrounding your current position. The current track (also known as the position history or breadcrumb trail) showing where the boat has been, along with saved tracks, waypoints, and the current route (when navigating), are overlaid on the chart.

You can use the 4-WAY Cursor Control key to shift/pan the chart to another area.

You can use the ZOOM (+/-) keys to zoom in and out.

You can use the INFO key to get information on the chart objects near the cursor.

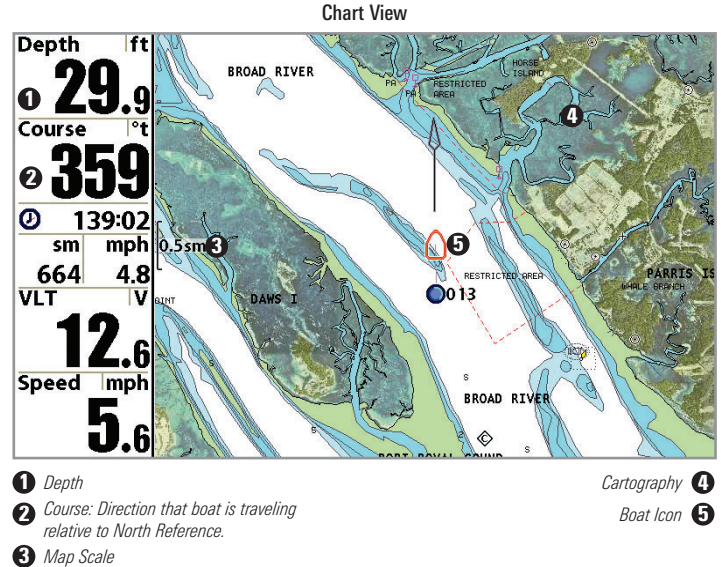
Photographic Overlay: Once Platinum™ Cartography is added to your Fishing System, and Chart Aerial Overlay is set to Visible using the Platinum™ Main Menu, the Chart View changes to show a photographic overlay. When you are zoomed out, it will appear as if you are in normal Chart View. Press the Zoom + key to zoom in and view the photographic data (when photographic data is available in the map).

See *Platinum™ Menu Tab: Chart Aerial Overlay* and *Navigation X-Press™ Menu; Platinum™ Cartography Addition: Overlay Transparency* for more information.

In addition, the Chart View will display Platinum™ Cartography data and icons if Chart Detail Level is set to All.

Map borders will only be displayed appropriately on the Chart View for Platinum™ Cartography if Map Borders is set to MMC/SD Only or All Visible.

See *Chart Menu Tab; Platinum™ Cartography Additions: Map Borders* for more information. See *Chart Menu Tab; Platinum™ Cartography Additions: Chart Detail Level* and *Nearest Port and Chart Information* for more information.



Nearest Port and Chart Information

Platinum™ Cartography provides additional information when you press the INFO key on a part of the Bird's Eye or Chart Views that contains Platinum™ information. Whether the cursor is active or inactive will determine exactly what you see, as well as whether there are pilot books or panoramic photos available for your specific location.

Chart Info Menu

Chart Info
Nearest Port ▶
Nearest Tide Station
Nearest Current Station

Pressing the INFO key when the cursor is not active displays the Chart Info menu, which in turn allows you to select Nearest Port. Nearest Port has additional Platinum™ Cartography functionality (Port Information, Pilot Book, and Panoramic Photo) when that information is available for the port:

Nearest Port Submenu

Port Info
Port Information
Pilot Book ▶
Panoramic Photo

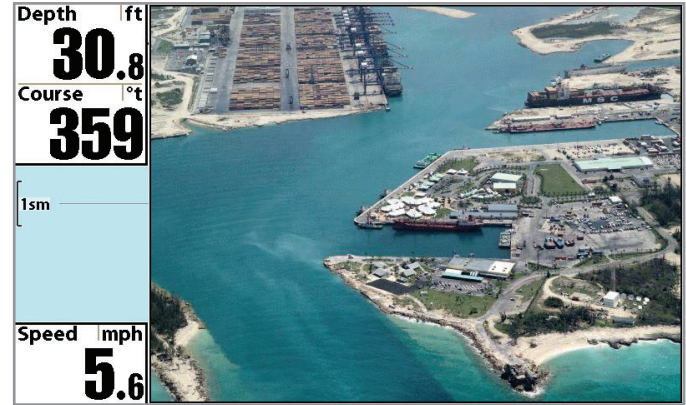
- If you select Pilot Book from this submenu, the Chart View changes to a new view, the Chart/Pilot Book Combo View. See *Chart/Pilot Book Combo View* for more information.

Nearest Port Submenu: Panoramic Photo

Port Info
Port Information
Pilot Book
Panoramic Photo ▶

- If you select Panoramic Photo, a new window will be displayed that is similar to the Tide Station Box, that covers the width of the screen, but not the readouts. Pressing EXIT removes the panoramic photo image from the screen and returns you to the Chart View with the cursor active.

Panoramic Photo



When you press the INFO key when the cursor is active, you will see the same choices, but without the Nearest Port submenu.

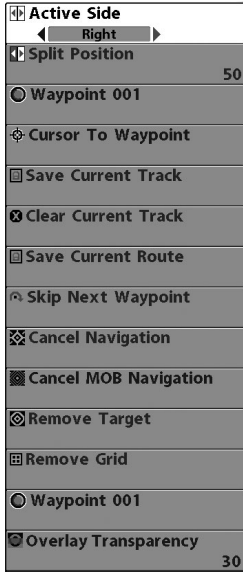
NOTE: If no pilot book or panoramic photos exist for your location, only the Chart Info data window will be displayed.

Chart Info Data Window

Chart Info
Latitude: N 38°35.792'
Longitude: W 122°14.177'
Lake.
PORT: Berryessa Lake - Napa Co.
Latitude: N 38°35.792'
Longitude: W 122°14.177'

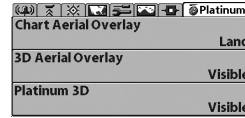
How Platinum™ Cartography Affects The Menu System

The menu system is divided into easy-to-use menu modules. The components of the menu system that are affected by Platinum™ Cartography are:



X-Press™ Menu

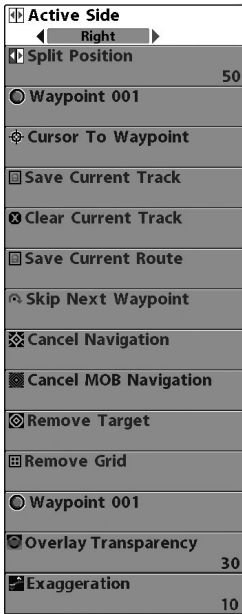
X-Press Menu - When a Platinum™ Cartography MMC/SD card is installed, the X-Press™ Menu will change to include the following menu item (depending on the view you are in): Overlay Transparency. See the *Navigation X-Press™ Menu; Platinum™ Cartography Addition (Navigation Views only)* for more information.



Main Menu System
Normal User Mode

Main Menu Tabs - When a Platinum™ Cartography MMC/SD card is installed, the following tab headings will appear: Alarms, Sonar, Navigation, Chart, Set Up, Views, Accessories, and Platinum™.

NOTE: See your Fishing System Operations Manual for information on the full menu choices.



Navigation X-Press™
Menu Affected By Platinum™
Cartography

Navigation X-Press™ Menu Platinum™ Cartography Addition

(Navigation Views only)

The Navigation X-Press™ Menu provides access to the settings most frequently used. Press the MENU key once while in the Bird's Eye View, the Chart View, or the Chart/Pilot Book Combo View, to access the Navigation X-Press™ Menu.

NOTE: Menu choices will vary depending on system settings, such as whether you are currently navigating, as well as what model you have.

The Navigation X-Press™ Menu will be added to the menu system when a GPS is connected to the Fishing System. When a Platinum™ Cartography MMC/SD card is also installed, the following Platinum™-specific choice is added to the Navigation X-Press Menu:

- Overlay Transparency (only in Navigation Views when Chart Aerial Photo is visible).



Overlay Transparency

*(only in Navigation Views when
Chart Aerial Overlay is visible)*

Overlay Transparency allows you to change the transparency of the chart aerial photo overlay when it is visible. When the Overlay Transparency is set to 0%, the overlay will be completely opaque. When the Overlay Transparency is set to 100%, the overlay will be completely invisible. (See **Platinum™ Main Menu Tab: Chart Aerial Overlay** for more information).

To change the transparency of the chart aerial overlay:

1. Highlight Overlay Transparency on the Navigation X-Press™ Menu.
2. Use the RIGHT 4-Way Cursor Control key to change the transparency of the overlay. (0% - 100%, Default = 30%)



Exaggeration

(Navigation Views, 1100 Series™ models only)

Exaggeration allows you to stretch the highs and lows on the 3D view so that hills and mountains look taller, and valleys and depths look lower. Exaggeration is only available for the 1100 Series™.

To change the setting of Exaggeration:

1. Highlight Exaggeration on the Navigation X-Press™ Menu.
2. Use the RIGHT 4-WAY Cursor Control key to change the exaggeration setting. (0 - 10, Default = 0)

Chart Detail Level	
Map Borders	All
Lat/Lon Grid	MMC/SD Only
Spot Soundings	Hidden
Nav aids on Bird's Eye View	Hidden
Shaded Depth	Visible
Set Simulation Position	5m
Set Map Offset	
Clear Map Offset	

Chart Menu Tab
Affected by Platinum™
Cartography

Chart Menu Tab Platinum™ Cartography Additions

Press the MENU key twice to access the Main Menu System, then press the RIGHT cursor key to select the Chart tab.

NOTE: Menu choices will vary depending on system settings.

The Navigation Menu Tab will be added to the menu system when a GPS Receiver is connected to your Fishing System. The following Chart menu choices will have additional functionality when a Platinum™ Cartography MMC/SD card is also installed:

- Chart Detail Level
- Map Borders



Chart Detail Level

Chart Detail Level allows you to select how much chart detail you want displayed on the **Navigation Views**. **Basic** shows land areas, ports, obstructions and restricted areas. **Navigation** shows nav aids, landmarks, ferryways and navigation routes in addition to the **Basic** information. **Underwater** shows depth contours, fishing areas, underwater wrecks, tides and currents in addition to the **Basic** and **Navigation** information. **All** shows roads, buildings, railways, and other notations in addition to the **Basic**, **Navigation**, and **Underwater** information.

To change the Chart Detail Level setting:

1. Highlight Chart Detail Level on the Chart Main Menu.
2. Use the LEFT or RIGHT 4-WAY Cursor Control keys to change the Chart Detail Level setting. (Basic, Navigation, Underwater, All, Default = All)

NOTE: Some chart details are only available with optional-purchase MMC/SD cards. If you have a Platinum™ Cartography MMC/SD card installed, selecting All will add all of the new business, wreck, road, and other Platinum™ icons to the Chart views.

Map Borders

Hidden

Map Borders

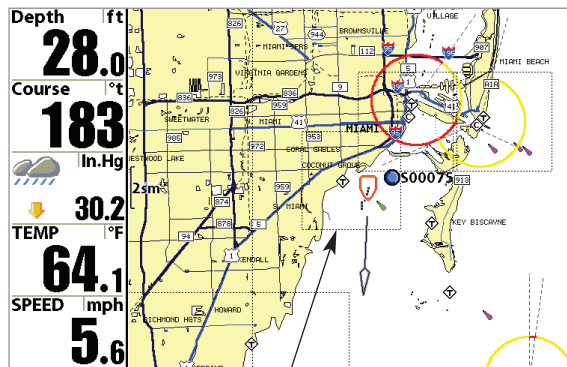
Map Borders allows you to display or hide map borders or gridlines when Platinum™ data is available. A Map Border indicates an area which contains a different map. If you have an optional-purchase Platinum™ Cartography MMC/SD card installed, selecting MMC/SD Only or All Visible will display Platinum™ map borders on the Chart Views, and 3D gridlines on the Bird's Eye View. The gridlines outline the 3D tiles to show where 3D renderings are available on the Bird's Eye View.

To change the Map Borders setting:

1. Highlight Map Borders on the Navigation Main Menu.
2. Use the LEFT or RIGHT 4-WAY Cursor Control keys to change the Map Borders setting. (Hidden, MMC/SD Only, All Visible, Default = MMC/SD only)

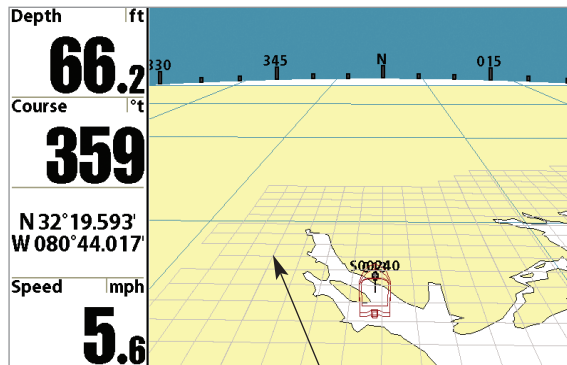
NOTE: Some map borders are only available with optional-purchase MMC/SD cards.

Map Borders, shown with
Optional-Purchase Navionics® Platinum™ Cartography on the Chart View

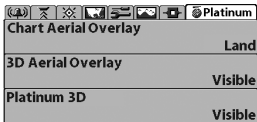


Map Borders

Grid Lines Showing 3D Tiles Controlled by Map Borders with Optional-Purchase Navionics® Platinum™ Cartography on the Bird's Eye View



Grid Lines Showing 3D Tiles



Platinum™ Menu Tab

Platinum™ Menu Tab

(only with Platinum™ Cartography MMC/SD card)

From any view, press the MENU key twice to access the Main Menu System, then use the 4-WAY Cursor Control keys to choose the Platinum™ menu tab.

The Platinum™ main menu tab will appear, and the following menu choices will be added to your Platinum™ menu tab when a Platinum™ Cartography MMC/SD card is installed in the Fishing System:

- Chart Aerial Overlay
- 3D Aerial Overlay
- Platinum 3D.

Chart Aerial Overlay



Chart Aerial Overlay

Chart Aerial Overlay allows you to choose what is shown when the Aerial Overlay is visible on the Chart views.

To change the visibility of the Chart Aerial Overlay:

1. Highlight Chart Aerial Overlay on the Platinum™ Main Menu.
2. Use the LEFT or RIGHT 4-WAY Cursor Control keys to change the Chart Aerial Overlay setting. (Hidden, Land, Land + Water. Default = Land).

3D Aerial Overlay



3D Aerial Overlay

3D Aerial Overlay allows you to make the Aerial Overlay visible on the Bird's Eye View.

To change the visibility of the 3D Aerial Overlay:

1. Highlight 3D Aerial Overlay on the Platinum™ Main Menu.
2. Use the LEFT or RIGHT 4-WAY Cursor Control keys to change the 3D Aerial Overlay setting. (Hidden, Visible, Default = Visible).

Platinum 3D



Platinum 3D

Platinum 3D allows you to view normal Bird's Eye information without having to switch back and forth between 3D and Bird's Eye View.

To change the setting of Platinum 3D:

1. Highlight Platinum 3D on the Platinum™ Main Menu.
2. Use the LEFT or RIGHT 4-WAY Cursor Control keys to change the Platinum 3D setting. (Hidden, Visible, Default = Visible).

Troubleshooting

Before contacting the Humminbird® Customer Resource Center, please read the following section. Taking the time to review these troubleshooting guidelines may allow you to solve a performance problem yourself, and therefore avoid sending your unit back for repair.

Fishing System Doesn't Power Up

If your Fishing System doesn't power up, use the Installation Guide that also comes with it for specific confirmation details, making sure that:

- the power cable is properly connected to the Fishing System control head,
- the power cable is wired correctly, with red to positive battery terminal and black to negative terminal or ground
- the fuse is operational
- the battery voltage of the power connector is at least 10 Volts.

Correct any known problems, including removing corrosion from the battery terminals or wiring, or actually replacing the battery if necessary.

Fishing System Defaults to Simulator with a Transducer Attached

A connected and functioning transducer will cause the newly-started Fishing System to go into Normal operating mode automatically. If, when you power up the Fishing System, it goes into Simulator mode automatically, even though a transducer is already connected, this means that the control head is not detecting the transducer. Perform the following troubleshooting tasks:

- Using the Installation Guide that also comes with your Fishing System, check to make sure that the transducer cable is securely connected to the Fishing System. Reconnect if necessary, and power up the Fishing System again to see if this fixes the problem.
- Replace the non-functioning transducer with a known good transducer if available and power up the control head again.
- Check the transducer cable. Replace the transducer if the cable is damaged or corroded.

Display Problems

There are several main conditions or sources of possible interference that may cause problems with the quality of the information displayed on the control head. Look in the following table for some symptoms of display problems and possible solutions:

Problem	Possible Cause
The control head loses power at high speeds.	If the power output of your boat's engine is unregulated, the control head may be protecting itself using its over-voltage protection feature. Make sure the input voltage does not exceed 20 Volts.
When the boat moves at higher speeds, the bottom disappears or suddenly weakens, or the display contains gaps.	<p>The transducer position may need to be adjusted. A mix of air and water flowing around the transducer (cavitation) may be interfering with the interpretation of sonar data. See your Installation Guide for suggestions on adjusting the transducer position.</p> <p>Electrical noise from the boat's engine may be interfering with sonar reception. See <i>Finding the Cause of Noise</i> for more information.</p>
There are no fish detected, even when you know they are in the water under the boat, or sonar readings seem weak or faulty.	<p>Sonar readings may be affected if the transducer is not positioned correctly (i.e. mounted at an angle, not straight down), or there is some kind of mechanical interference, either because it is mounted inside a hull that is too thick for proper sonar transmission, the bond between the transducer and the hull is not airtight, or because the transducer is dirty. Check with your Installation Guide for guidance on re-positioning the transducer, and make sure the transducer is clean.</p> <p>Low battery voltage may be affecting the power of signal transmission.</p> <p>Electrical noise from the boat's engine may be interfering with sonar reception. See <i>Finding the Cause of Noise</i> for more information.</p>
Map Data is Slow to Load	<p>Platinum™ map data, especially the 3D data, can take a while to load. This is normal, especially when it is first installed.</p> <p>NOTE: Platinum™ information, such as a 3D overlay or aerial view, will not be displayed if you are zoomed out too far, or zoomed in too far. Use the ZOOM keys to adjust your perspective until you can see the Platinum™ information.</p>

Finding the Cause of Noise

Electrical noise usually affects the display with many black dots at high speeds, and high sensitivity readings. One or more of the following sources can cause noise or interference:

Possible Source of Noise	Isolation
Other electronic devices	Turn off any nearby electronic devices to see if the problem goes away, then turn them on one at a time to see if the noise re-appears.
The boat's engine	To determine whether the boat's engine is the source of the noise, increase the RPMs while the boat is in neutral and stationary to see if the noise increases proportionately; if noise appears when you rev the engine, the problem could be the spark plugs, alternator, or tachometer wiring. Replace the spark plugs with resistor plugs, install an alternator filter, or route the control head power and transducer cables away from the engine wiring.
Cavitation from the boat's propeller	Turbulence created by the propeller can cause noise; make sure the transducer is mounted at least 15" (38 cm) from the propeller, and that the water flows smoothly over the face of the transducer at all times.

Humminbird® Accessories

Accessories customize your Fishing System to your needs and enable you to stay on the edge of new technology. When an accessory is connected to the Fishing System, additional menus and readouts are added automatically to the Main Menu System. Accessories available today that are supported by your Fishing System include:

WeatherSense® Fishing Condition Monitor: purchase and plug in the WeatherSense® accessory to your Fishing System to obtain barometric pressure readouts and trend data in real time.

Wireless Sonar Link (WSL): purchase the Wireless Sonar Link (WSL) accessory to receive remote sonar signals from a SmartCast® Remote Sonar Sensor (RSS). Radio signals from the RSS are received by the WSL and are transmitted over the Accessory Bus to the Fishing System.

PC Connect Cable: Purchase the PC Connect Cable to connect the Fishing System to a PC in order to upload product software updates and new features obtained from www.humminbird.com. This accessory requires the MSWindows-compatible HumminbirdPC™ software downloaded from our website to your PC in order to communicate with the Fishing System.

Downriggers are the key to catching fish you otherwise couldn't even touch. And now Humminbird's **CannonLink™ Downrigger Controller** makes operation of up to six Cannon™ Mag 20 DT or Mag 20 DT/HS downriggers incredibly easy. Using the controls on your Fishing System, deploy or retrieve downriggers, hold a specific distance off the bottom, cycle downriggers between two depths, and adjust the Positive Ion Control. Even see temperature and water clarity at depth and speed at the ball right on-screen

when using the Cannon™ Speed-n-Temp. You'll never be shorthanded again, just make adjustments from the helm, while your mate rigs the lines and brings in the fish!

With the new **InterLink™ Network Connection**, you can now share GPS position, waypoints, routes and your current track between two Humminbird® Fishing Systems in real time. Mark a waypoint at the console, and it's instantly available on the second unit. No matter where you're at on the boat, you'll have access to your critical fishing and navigation information. Plus, daisy chain InterLink™ with other System Modules and you'll have a network that lets you share digital data around the boat. It's a simply, clearly, better networking solution!

Be sure to check out our website www.humminbird.com for additional new and exciting accessories to grow your Fishing System!

***NOTE:** Each accessory requires a separate purchase. You can visit our website at www.humminbird.com or contact our Customer Resource Center at 1-800-633-1468 for additional details.*

Acquisition Time: The length of time that a GPS receiver typically takes to determine a position from at least three satellites. Humminbird® GPS receivers provide very fast acquisition times (under one minute), permitting users to get out on the water faster.

Alarm, Arrival: The audible alert that sounds when the boat is equal to or less than the alarm setting (25 feet – 3000 feet) from the location of the destination waypoint.

Alarm, Drift: Drift Alarm is an audible alert that sounds when the boat is equal to or over the alarm setting (25 feet – 3000 feet) from the location where the alarm was turned on.

Alarm, Off-Course: Off-Course Alarm is an audible alert that sounds when the boat's distance from the intended Track, (Cross Track Error), is equal to or over the alarm setting (25 feet – 3000 feet). See *Track* and *Cross Track Error*.

Altitude: Altitude measures height above sea level. Altitude is a measurement that can be provided by GPS.

Bearing (BRG): Bearing is the direction to a destination waypoint measured in degrees from North (i.e. 321°, where 000° is North, 090° East, 180° is South, 270° is West).

Chartplotter: Chartplotter describes a navigation device that shows Present Position on a Map, along with Tracks, Waypoints, and Routes. All Chartplotters are also considered Trackplotters. All Humminbird® GPS Combo units are Chartplotters. See *Trackplotter*.

Cold Start: Cold Start refers to the procedure that a GPS receiver must perform when it does not have historical information regarding its current location. This procedure typically lasts for several minutes, and may be experienced upon first power up of the receiver, or if the receiver has been moved a great distance.

Course Over Ground (COG): Course Over Ground is the current direction the boat is traveling measured in degrees from North (i.e. 321°, where 000° is North, 090° East, 180° is South, 270° is West). When the Course Over Ground is equal to Bearing, the boat is said to be "On Course" and will arrive at the destination in the most efficient manner. COG is often confused with Heading. See *Heading*.

Cross Track Error (XTE): Cross Track Error is the straight-line distance of the boat from the intended Track. XTE measures how far the boat is off course, and also triggers the Off Course Alarm. See *Track*.

Differential GPS (DGPS): Differential GPS is a system to improve the position accuracy of the Department of Defense GPS through the use of secondary "correction signals" broadcast from ground stations around the coastal United States and on some inland waterways. These correction signals are provided by the USCG and received by an auxiliary Differential Beacon Receiver (DBR) that connects to the GPS receiver. The advent of WAAS has largely negated the need for the added expense of a DBR in the United States.

Distance To Go: Distance To Go is the straight-line distance between Present Position and the Destination Waypoint. DTG and SOG (Speed Over Ground) are used to calculate Time To Go. See *Time to Go* and *Speed Over Ground*.

Estimated Position Error (EPE): Estimated Position Error is a calculation that indicates the potential position inaccuracy the user may experience due to a variety of GPS factors which include satellite position in the sky, signal strength and others factors.

Fix Type: Fix Type indicates whether the GPS receiver is providing 2D fix or 3D fix. A 2D fix requires only three satellites and provides only latitude and longitude. A 3D fix requires four or more satellites, and provides latitude, longitude and altitude.

GPS: GPS is an acronym for Global Positioning System. GPS provides accurate position (latitude, longitude, altitude) information virtually anywhere on the earth through satellite technology and personal receivers on the ground. A series of geosynchronous satellites broadcast a unique signal toward the earth once per second. A GPS receiver, such as that included with many Humminbird® products, receives the signals from these satellites and is able to determine position based on very slight differences in the time each signal is received and the receiver's knowledge of the location of each of the satellites.

Heading: Heading describes the direction the boat is pointing and is measured in degrees (i.e. 321°, where 000° is North, 090° East, 180° is South, 270° is West). Due to wind and waves, the boat is often traveling in a slightly different direction than it is heading, and therefore Heading is often confused with Course Over Ground. See *Course Over Ground*.

Map Datum: A Map Datum refers to a particular survey of the earth's surface that was referenced when creating a chart (i.e. WGS84). Since the earth is not flat, and not even consistently round, a mathematical model must be used to translate coordinates from the sphere of the earth to the flat surface of a chart.

This mathematical model is the Map Datum. Historically, many different Map Datums have been used around the world to create maps; often a reference to the Map Datum can be found in the legend of a paper map. It is important to select the correct Map Datum setting in your fishfinder when comparing GPS position to a paper chart to avoid slight position inaccuracies. Almost all electronic charts use the WGS84 Map Datum and therefore, they do not require setting changes.

MMC: MMC is an acronym for Multi Media Card. An MMC is a postage stamp-sized memory device used to store electronic data such as maps, waypoints, routes and other information. MMC is a very rugged format suitable for the marine environment, but it is not waterproof. The MMC is removable from Humminbird® products, and can be used in a PC that is equipped with an appropriate card reader. MMC is the same format that many digital cameras use. See *SD*.

North, Magnetic: North is the principle reference point of the compass (i.e. North is 000°). Magnetic North relies on the earth's magnetic field to align a metal pointer generally towards True North. However, due to local variations in the earth's magnetic field around the globe, the difference between True North and Magnetic North can be greater than 10°. See *True North*.

North, True: North is the principle reference point of the compass (i.e. North is 000°). True North uses the axis of the rotation of the earth as the reference for North and is constant for all points on the earth. Most GPS units default to True North as the setting. The GPS heading may vary from the boat compass heading because the compass uses Magnetic North. Humminbird® GPS units provide the option of selecting True or Magnetic readouts by using the North Reference menu. See *Magnetic North*.

Present Position: Present Position is the current location (latitude, longitude) determined by GPS. The Present Position is indicated on-screen by a directional boat icon if the boat is moving, or a round symbol if the boat is stationary.

Route: A Route is series of waypoints linked together in a specific sequence to define a navigation path between two points, and saved in the fishfinder's memory. Routes are often used when frequently traveling between two or more locations because it is a faster and more accurate method than repeatedly selecting individual waypoints each time one travels through the same area. Routes consist of a Start Waypoint, an End Waypoint, and a series of waypoints in between. Users can begin navigation at the beginning, the end (to run the route in reverse) or at any waypoint in between. See *Waypoint*.

SD: SD is an acronym for Secure Digital. An SD card is virtually identical in function to an MMC; however, the speed at which information can be accessed is generally faster, the storage capacity is generally larger, and the card has security features which can be used to prevent extracting the data from the card. SD is the same format that many digital cameras use. See *MMC*.

Selective Availability: Selective Availability (SA) is a GPS system "feature" that can be implemented by the U.S. Department of Defense (DoD) to degrade the accuracy of GPS positioning information. With SA active, the GPS is accurate to within 100 meters 95% of the time. With SA inactive, the GPS is accurate to within 45 meters 95% of the time. Currently, SA is inactive and the consumer can enjoy the greater precision GPS provides; however, the DoD reserves the right to activate SA at any time.

Speed Over Ground (SOG): Speed Over Ground is the measurement of the boat's progress across a given distance, and is the speed measurement provided

by GPS. An alternate, Speed Through Water, is provided by a speed paddlewheel, and is the measurement of the flow past the boat, which may vary depending on current speed and direction. Speed Over Ground is optimal for navigation because accurate destination times can be derived from this measurement. Humminbird® products allow for input and display of both speed measurements.

Time To Go (TTG): Time To Go is the estimated time required to reach the destination waypoint. TTG is calculated using the SOG and DTG. See *SOG* and *DTG*.

Track: A Track is a series of saved points that define the past path of the boat. These Track Points are saved at regular time intervals. Tracks are a useful and quick method to see where you've been, and an easy guide to follow to get you back to the starting point. Generally, all GPS units have a limited number of Track Points that can be saved before the unit runs out of memory and begins erasing the first track points saved. Because of this, the user can adjust the Track Point Interval menu to increase the amount of time between when points are saved, and thus extend the distance covered by a track. Tracks can also be permanently saved to memory, and re-displayed at the user's option.

Track Line (TRK): The Track Line is the desired line of travel between two waypoints, and represents the most efficient path between the two points because it is a straight line. The TRK is measured in degrees (i.e. 321°, where 000° is North, 090° East, 180° is South, 270° is West). See *Cross Track Error* and *Course Over Ground*.

Trackplotter: Trackplotter describes a navigation device that shows Present Position, along with Track, Waypoint, and Routes, but NO MAP in the background. See *Chartplotter*.

Trolling Grid: Trolling Grid is a Humminbird® feature that displays a precise reference grid around a waypoint. This grid is used as a guide pattern for trolling around a specific area to assure a more efficient and complete coverage of that area. Trolling Grid resolution be changed by zooming in or out on the chart. The Trolling Grid can also be rotated on the display to orient it for optimal boat course for wave and wind conditions.

UTC: UTC is an acronym for Universal Time Constant. UTC is the “standard time” used in navigation, and is the local time in Greenwich England. (UTC is equivalent to Greenwich Mean Time (GMT)). To display the correct Local Time in a Humminbird® GPS unit, the user must use the Local Time Zone menu and select the time zone (i.e. EST, CST).

WAAS: WAAS is an acronym for Wide Area Augmentation System. WAAS is complementary technology to GPS that provides enhanced accuracy through correction signals broadcast from Federal Aviation Administration WAAS satellites stationed over the USA. These secondary signals are automatically received by the standard Humminbird® GPS Receiver. With WAAS signal, GPS accuracy is improved to within 3 meters 95% of the time. Outside the United States, regional governmental coalitions have created similar systems such as EGNOS (Europe) and MSAS (Japan).

Waypoint: A Waypoint is the saved location (latitude, longitude) of a point of interest that is stored in a GPS receiver’s memory. This can include a marker buoy, dock, fishing hole or anywhere else the user may want to return to. Humminbird® products offer the ability to name and assign a symbol to the saved location. Depth, Date and Time of Day when the waypoint was created is also saved.

Waypoint Target: Waypoint Target is a Humminbird® feature that displays a precise “bull’s eye” around a selected waypoint. This bull’s eye is used to easily monitor boat position relative to a waypoint, and is useful for fishing over submerged structure. With Waypoint Targets, a quick look at the screen lets you know how far off the waypoint the boat has drifted.

Contact Humminbird®

Contact the Humminbird® Customer Resource Center in any of the following ways:

By Telephone:

(Monday - Friday 8:00 a.m. to 4:30 p.m. Central Standard Time):

1-800-633-1468

By e-mail:

(typically we respond to your e-mail within three business days):

service@humminbird.com

For direct shipping, our address is:

Humminbird

Service Department

678 Humminbird Lane

Eufaula, AL 36027 USA

